

APPENDIX B
ARCHAEOLOGICAL STRATIGRAPHIC DATA

APPENDIX B.i. ARCHAEOLOGICAL STRATIGRAPHIC DATA

TRENTON HOUSE

Trenton House. Excavation Unit 1

Context 1 [4] - sub-floor build-up and destruction deposit; includes rodent burrow [4]; equivalent to Excavation Unit 1A, context 1 and Excavation Unit 1B, context 3 [mid-/late 20thc]

Description - dry, silty ash, slightly silty (10YR 3/2)

Stratigraphy - overlies 3, 7, 8, 9; abuts 2, 5

Cross Refs. - Matrix 5.1; Figures 5.5 and 5.6 (not illustrated in plan); Plates 5.2, 5.5 and 5.9-5.12

Context 2 - brick wall, foundation for flooring system in Lido Gardens kitchens; equivalent to Excavation Unit 1A, context 35 [c.1910-20 thru late 20thc]

Description - mortared red brick wall, one brick length wide, seven courses deep; top and bottom courses headers, stretchers in between; wood sill on top supports wooden floor joists

Stratigraphy - contained w/in 3; abutted by 1

Cross Refs. - Matrix 5.1; Figures 5.3-5.6; Plates 5.2, 5.4 and 5.12

Context 3 - builders trench for foundation [2]; equivalent to Excavation Unit 1A, context 3 [c.1910-20]

Description - silty sand w/ sandy mortar, pebbles (10YR 3/3)

Stratigraphy - underlies 1; contains 2; cuts 8, 9

Cross Refs. - Matrix 5.1; Figures 5.5 and 5.6 (not illustrated in plan); Plate 5.12

Context 4 - see context 1

Context 5 - brick wall, foundation for flooring system in Lido Gardens kitchens; applied against earlier porch foundation [c.1910-20 thru late 20thc]

Description - mortared red brick foundation, two brick widths wide, ten courses deep; top and bottom courses headers, stretchers in between; wood sill on top supports wooden floor joists

Stratigraphy - abutted by 1; contained w/in 7; abuts 2 [Excavation Unit 1B]

Cross Refs. - Matrix 5.1; Figures 5.3-5.6; Plates 5.2-5.6, 5.8, 5.9 and 5.11

Context 6 - see context 8

Context 7 - builders trench for foundation [5] [c.1910-20]

Description - sandy loam w/ brick, stone, mortar (10YR 4/4)

Stratigraphy - underlies 1; cut by 4; contains 5; cuts 9

Cross Refs. - Matrix 5.1; Figures 5.5 and 5.6 (not illustrated in plan); Plates 5.9-5.11

APPENDIX B.i. ARCHAEOLOGICAL STRATIGRAPHIC DATA, cont.

Trenton House, Excavation Unit 1

Context 8 [6, 9] - yard build-up/fill; equivalent to Excavation Unit 1A, contexts 2 and 37 and Excavation Unit 1B, context 7 [late 19th/early 20thc]

Description - compact sandy silt (10YR 3/3); includes a small disturbance of silty sand w/ charcoal (10YR 3/2) [6] and, to the north, some gravelly silty sand w/ brick and mortar (10YR 4/3, 5YR 5/6) [9]

Stratigraphy - underlies 1; cut by 3, 7; overlies 11

Cross Refs. - Matrix 5.1; Figures 5.5 and 5.6 (not illustrated in plan); Plates 5.2, 5.5, 5.6 and 5.9-5.12

Context 9 - see context 8

Context 10 - see Excavation Unit 1B, context 2

Context 11 [16] - rubble fill/?yard build-up; equivalent to Excavation Unit 1A, context 5 [mid-19thc]

Description - mottled silty sand, clay w/ large pieces of rubble, cut stone, mortar, brick (10YR 4/4); rubble more concentrated to north

Stratigraphy - underlies 8, 9; overlies 12, 13a, 14, 15, 17, 18, 19, 21, 23

Cross Refs. - Matrix 5.1; Figures 5.5 and 5.6 (not illustrated in plan); Plates 5.5, 5.6 and 5.9-5.12

Context 12 - trash pit? [mid-19thc]

Description - sandy loam w/ mortar, brick, charcoal, bones, nails, ash (10YR 4/3)

Stratigraphy - underlies 11; cuts 18

Cross Refs. - Matrix 5.1; Figure 5.3 (not illustrated in profile); Plate 5.3

Context 13 [13a, 13b] - sand and gravel bedding for path; probably originally a brick walk, but bricks removed; equivalent to Excavation

Unit 1A, context 4 [mid-19thc]

Description - mottled coarse, gravelly sand (10YR 5/8, 10YR 6/6) [13a]; underlain by coarse sand w/ pebbles and loam (10YR 3/3) [13b]

Stratigraphy - underlies 11; contained w/in 14, 15

Cross Refs. - Matrix 5.1; Figures 5.3 and 5.5; Plates 5.3 and 5.10

Context 13a - see context 13

Context 13b - see context 13

APPENDIX B.i. ARCHAEOLOGICAL STRATIGRAPHIC DATA, cont.

Trenton House, Excavation Unit 1

Context 14 [15, 17, 18, 19] - garden/yard soil; equivalent to Excavation Unit 1A, context 7 [mid-19thc]

Description - well-mixed loam (10YR 4/4) mottled w/ gravelly sand (10YR 5/8) [15]; also includes mottled sandy silt (7.5YR 4/4, 10YR 4/3) [17], silty sand (10YR 5/4) [18] and sandy loam w/ patches of gravel, pebbles [19]

Stratigraphy - underlies 11, 12; contains 13; cut by 21, 23; overlies 20, 25

Cross Refs. - Matrix 5.1; Figures 5.3, 5.5 and 5.6; Plates 5.3, 5.5, 5.6 and 5.9-5.12

Context 15 - see context 14

Context 16 - see context 11

Context 17 - see context 14

Context 18 - see context 14

Context 19 - see context 14

Context 20 - brick walk; partially robbed; equivalent to Excavation Unit 1B, context 12 [early 19thc]

Description - dry-laid red brick surface, ?handmade bricks, one course deep; bricks laid diagonal to long axis of path with path edge defined by a single line of bricks laid lengthwise parallel to the long axis of the path

Stratigraphy - underlies 16, ?18; overlies 22

Cross Refs. - Matrix 5.1; Figure 5.3 (not illustrated in profile); Plates 5.4-5.6, 5.9 and 5.11

Context 21 - two postholes; probably for a fence or trellis and 20; associated w/ [23] and Excavation Unit 1A, context 17 [mid-19thc]

Description - hollow rectangular holes, sealed by [11]

Stratigraphy - underlies 11; cuts 18

Cross Refs. - Matrix 5.1; Figure 5.3 (not illustrated in profile); Plates 5.4-5.6

Context 22 - sand bedding for brick walk [20]; equivalent to Excavation Unit 1B, context 13 [early 19thc]

Description - silty sand (10YR 3/3) mottled w/ pockets of sand (10YR 5/3)

Stratigraphy - underlies 20; overlies 27

Cross Refs. - Matrix 5.1; Figures 5.3 and 5.6; Plates 5.4-5.6, 5.9, 5.11 and 5.12

Context 23 - ?garden border; associated w/ postholes [21] and Excavation Unit 1A, context 17 [mid-19thc]

Description - two red bricks set on edge and in line, ?handmade

Stratigraphy - underlies 11; overlies 18

Cross Refs. - Matrix 5.1; Figure 5.3 (not illustrated in profile); Plate 5.4

APPENDIX B.i. ARCHAEOLOGICAL STRATIGRAPHIC DATA, cont.

Trenton House, Excavation Unit 1

Context 24 - garden/yard soil; equivalent to Excavation Unit 1A, context 24 and Excavation Unit 1B, context 14 [late 18th/early 19thc]

Description - loam (10YR 3/4)

Stratigraphy - underlies 25, 27; cut by 26; overlies 28, 29, 31

Cross Refs. - Matrix 5.1; Figures 5.3 and 5.5; Plates 5.4, 5.6 and 5.10

Context 25 - ?redeposited subsoil [?1830s]

Description - mottled silty loam (10YR 5/6; 10YR 3/4)

Stratigraphy - underlies 19; overlies 24, 26

Cross Refs. - Matrix 5.1; not illustrated

Context 26 - robber trench for outbuilding foundation; equivalent to Excavation Unit 1A, context 19 [robbed ?1830s; building constructed late 18th/early 19thc]

Description - compact limestone, mortar and brick rubble w/in loam (10YR 3/3); approximately three feet deep, two rectangular/square stains at base, possibly planks

Stratigraphy - underlies 14, 15, 25; cuts 24

Cross Refs. - Matrix 5.1; Figures 5.4 and 5.5; Plates 5.4 and 5.6-5.8

Context 27 - sand and gravel base for brick walk; equivalent to Excavation Unit, context 13 [early 19thc]

Description - gravelly sand (10YR 5/8) mottled w/ pockets of silty sand (10YR 4/3); underlain by silty sand w/ gravels and pebbles (10YR 4/4)

Stratigraphy - underlies 22; overlies 24

Cross Refs. - Matrix 5.1; Figures 5.3 and 5.6; Plates 5.6, 5.9, 5.11 and 5.12

Context 28 - ?posthole [late 18thc]

Description - sand, lime, mortar in sandy silt (10YR 4/4)

Stratigraphy - underlies 24; cuts 30

Cross Refs. - Matrix 5.1; Figure 5.4 (not illustrated in profile); Plate 5.8

Context 29 [30] - garden/yard soil; equivalent to Excavation Unit 1A, context 25 and Excavation Unit 1B, context 15 [late 18thc]

Description - sandy silt w/ charcoal, lime, pebbles, stone (10YR 3/4); sandy loam/silt w/ pockets of debris (10YR 4/6) [30]

Stratigraphy - underlies 24; cut by 28, 31; overlies 32, 33, 34, 35, 36, 38

Cross Refs. - Matrix 5.1; Figures 5.5 and 5.6 (not illustrated in plan); Plates 5.9-5.12

Context 30 - see context 29

APPENDIX B.i. ARCHAEOLOGICAL STRATIGRAPHIC DATA, cont.

Trenton House, Excavation Unit 1

Context 31 - ?posthole [late 18thc]

Description - hollow hole, three inches in diameter, ten inches deep,
pitched at five-degree angle

Stratigraphy - underlies 24; cuts 30

Cross Refs. - Matrix 5.1; Figure 5.4 (not illustrated in profile)

Context 32 - ash deposit [late 18thc]

Description - ash w/ debris

Stratigraphy - underlies 30; overlies 36

Cross Refs. - Matrix 5.1; Figures 5.4 and 5.6; Plates 5.9, 5.11
and 5.12

Context 33 [41] - ?posthole [late 18thc]

Description - sandy loam (10YR 4/3); 3 x 5-inch mortar pad at
base [41], ?for post

Stratigraphy - underlies 30; cuts 36

Cross Refs. - Matrix 5.1; Figure 5.4 (not illustrated in profile);
Plate 5.9

Context 34 [42] - ?posthole [late 18thc]

Description - sandy loam (10YR 4/4); [42] is loam w/ brick,
mortar, schist, pebbles (10YR 4/4) with a compact area w/out
debris (?post mold); 12 x 16-inch posthole containing a
4 x 8-inch post mold

Stratigraphy - underlies 30; cuts 36

Cross Refs. - Matrix 5.1; Figure 5.4 (not illustrated in profile);
Plate 5.8

Context 35 [43] - ?posthole [late 18thc]

Description - sandy loam w/ brick mortar (10YR 4/3); [43] is
debris, brick, mortar, shell, stone w/ loam (10YR 4/3)

Stratigraphy - underlies 30; cuts 36

Cross Refs. - Matrix 5.1; Figure 5.4 (not illustrated in profile);
Plates 5.8 and 5.9

Context 36 - construction deposit relating to erection of house
[mid-1770s] or outbuilding; equivalent to Excavation Unit 1B,
context 16 [late 18thc]

Description - compact white, gray, yellow mortar w/ some bone,
brick, foundation stone; underlain by lens of clayey silt
(7.5YR 5/6)

Stratigraphy - underlies 29, 30, 32; cut by 33, 34, 35;
overlies 37, 40

Cross Refs. - Matrix 5.1; Figures 5.4-5.6; Plates 5.8-5.12

APPENDIX B.i. ARCHAEOLOGICAL STRATIGRAPHIC DATA, cont.

Trenton House. Excavation Unit 1

Context 37 [37a] - construction deposit relating to erection of house [mid-1770s] or outbuilding [late 18thc]; ?equivalent to Excavation Unit 1A, contexts 27 and 29

Description - debris (brick, mortar, mica schist) in loam (7.5YR 4/4)

Stratigraphy - underlies 29, 36; cut by 38; overlies 39, 40

Cross Refs. - Matrix 5.1; Figures 5.4 and 5.5; Plates 5.8 and 5.10

Context 37a - see context 37

Context 38 - ?post hole [late 18thc]

Description - sandy loam (10YR 4/3), 10 x 6-inch rectangular feature, four inches deep; w/ 7 x 7-inch stone slab standing on end to the south (?post support)

Stratigraphy - cuts 37; underlies 29

Cross Refs. - Matrix 5.1; Figure 5.4 (not illustrated in profile)

Context 39 - ?plank scar [mid-1770s]

Description - loam w/ mortar, brick, mica schist (like [37]) (10YR 5/3); 31 x 8-inch rectangular feature, two inches deep

Stratigraphy - underlies 37; overlies 40

Cross Refs. - Matrix 5.1; Figure 5.4 (not illustrated in profile); Plate 5.8

Context 40 - yard soil; equivalent to Excavation Unit 1A, context 30 and Excavation Unit 1B, context 17 [mid-18thc]

Description - sandy silty loam (7.5YR 4/2); contains possible plow scars [44 and 47]

Stratigraphy - underlies 36, 37, 39; overlies 44, 45, 47

Cross Refs. - Matrix 5.1; Figures 5.4 and 5.6; Plates 5.8-5.12

Context 41 - see context 33

Context 42 - see context 34

Context 43 - see context 35

Context 44 - ?plow scar [mid-18thc]

Description - loam (7.5YR 4/4)

Stratigraphy - underlies 40; cuts 45

Cross Refs. - Matrix 5.1; Figure 5.4 (not illustrated in profile)

Context 45 [46] - subsoil

Description - silty clay (10YR 5/6); [46] more compact

Stratigraphy - underlies 40; cut by 42, 43, 44, 47

Cross Refs. - Matrix 5.1; Figures 5.5 and 5.6 (not illustrated in plan); Plates 5.10-5.12

Context 46 - see context 45

APPENDIX B.i. ARCHAEOLOGICAL STRATIGRAPHIC DATA, cont.

Trenton House, Excavation Unit 1

Context 47 - ?plow scar; equivalent to Excavation Unit 1B,
context 20 [mid-18thc]

Description - loam (7.5YR 4/4)

Stratigraphy - underlies 40; cuts 45

Cross Refs. - Matrix 5.1; Figure 5.4 (not illustrated in profile)

APPENDIX B.i. ARCHAEOLOGICAL STRATIGRAPHIC DATA, cont.

Trenton House, Excavation Unit 1A

Context 1 - sub-floor build-up and destruction deposit; equivalent to Excavation Unit 1, context 1 and Excavation Unit 1B, context 3 [mid-/late 20thc]

Description - debris, mortar, brick, wood (10YR 3/2)

Stratigraphy - overlies 2, 3; abuts Excavation Unit 1, context 2

Cross Refs. - Matrix 5.1; Figure 5.7 (not illustrated in plan); Plates 5.15-5.17

Context 2 - yard build-up/fill; equivalent to Excavation Unit 1, context 8 and Excavation Unit 1B, context 7 [late 19th/early 20thc]

Description - ash and cinder in sandy silt (10YR 3/3)

Stratigraphy - underlies 1; cut by 3; overlies 37

Cross Refs. - Matrix 5.1; Figure 5.7 (not illustrated in plan); Plates 5.15-5.17

Context 3 - builders trench for foundation [35]; equivalent to Excavation Unit 2, context 3 [c.1910-20]

Description - silty sand w/ ash, debris (10YR 3/3)

Stratigraphy - underlies 1; cuts 2; contains 35

Cross Refs. - Matrix 5.1; Figure 5.7 (not illustrated in plan); Plates 5.15 and 5.17

Context 4 [12, 14, 34] - sand and gravel bedding for path; originally supported a brick walk [6], but bricks mostly removed [11]; equivalent to Excavation Unit 1, context 13 [mid-19thc]

Description - three distinct layers of mottled coarse gravelly sand (10YR 6/6, 10YR 6/3) with a layer of sandy loam (10YR 4/4) [34], similar to [7], sandwiched between the two upper layers [4 and 12]

Stratigraphy - underlies 5, 6; contained w/in 7, 13

Cross Refs. - Matrix 5.1; Figures 5.3 and 5.7; Plates 5.13, 5.16 and 5.17

Context 5 - rubble fill/?yard build-up; equivalent to Excavation Unit 1, context 11 and Excavation Unit 1B, context 9 [mid-19thc]

Description - building debris and rubble in silty sand (5YR 4/3)

Stratigraphy - underlies 37; overlies 4, 6, 9, 11, 17

Cross Refs. - Matrix 5.1; Figure 5.7 (not illustrated in plan); Plates 5.15-5.17

Context 6 [10] - brick walk; partially robbed; probably related to brick scatter [11] [mid-19thc]

Description - remnant of dry-laid red brick surface laid on sand and gravel bedding [4]

Stratigraphy - underlies 5; overlies 4

Cross Refs. - Matrix 5.1; Figures 5.3 and 5.7; Plate 5.17

APPENDIX B.i. ARCHAEOLOGICAL STRATIGRAPHIC DATA, cont.

Trenton House, Excavation Unit 1A

Context 7 [8, 13, 16] - garden/yard soil; equivalent to Excavation Unit 1, context 14 [mid-19thc]

Description - well-mixed sandy loam (10YR 4/4) [7] w/ mottled sandy silt (7.5YR 4/4, 10YR 4/3) [8], loamy sand (7.5YR 4/2) [13] and loamy silt (10YR 4/4) [16]

Stratigraphy - underlies 9, 11, 17; contains 4, 12, 14, 34; overlies 18, 24

Cross Refs. - Matrix 5.1; Figures 5.3 and 5.7; Plates 5.13 and 5.15-5.17

Context 8 - see context 7

Context 9 - stone deposit; possibly part of [5], rubble fill/?yard build-up [mid-19thc]

Description - stone fragments, no mortar

Stratigraphy - underlies 5; overlies 8

Cross Refs. - Matrix 5.1; Figures 5.3 and 5.7; Plates 5.13 and 5.15

Context 10 - see context 6

Context 11 - ? dislodged brick walk; probably connected w/ [6] [mid-19thc]

Description - scatter of unmortared red brick

Stratigraphy - underlies 5; overlies 7

Cross Refs. - Matrix 5.1; Figure 5.3 (not illustrated in profile); Plate 5.13

Context 12 - see context 4

Context 13 - see context 7

Context 14 - see context 4

Context 15 - see context 18

Context 16 - see context 7

Context 17 - posthole; probably for a fence or trellis; associated w/ Excavation Unit 1, contexts 21 and 23 [mid-19thc]

Description - hollow rectangular hole, 14 inches deep

Stratigraphy - underlies 5; cuts 16

Cross Refs. - Matrix 5.1; Figure 5.3 (not illustrated in profile)

Context 18 [15] - destruction deposit connected w/ robbed outbuilding foundation [19] [?1830s]

Description - compact debris, brick, stone and mortar rubble w/in loam (10YR 3/3)

Stratigraphy - underlies 7, 13, 16; overlies 19, 22, 23

Cross Refs. - Matrix 5.1; Figures 5.4 and 5.7; Plates 5.15-5.17

APPENDIX B.i. ARCHAEOLOGICAL STRATIGRAPHIC DATA, cont.

Trenton House, Excavation Unit 1A

Context 19 [20, 21, 32, 36, 38] - robber trench for outbuilding foundation [robbed ?1830s; building constructed late 18th/early 19thc]; equivalent to Excavation Unit 1, context 26

Description - principal fill is compact limestone, mortar and brick rubble w/in loam (10YR 3/3), approximately three feet deep [19]; variations towards base of robber trench include: a layer of clayey sand, probably redeposited subsoil (10YR 4/6) [20]; a dark soil stain [21] similar to those found at the base of Excavation Unit 1, context 26; compacted subsoil [32]; two layers of loamy sand (10YR 4/4), minor lenses [36, 38] accumulated immediately after removal of the foundation and prior to the filling of the trench

Stratigraphy - underlies 18; cuts 22, 24

Cross Refs. - Matrix 5.1; Figures 5.4 and 5.7; Plates 5.14-5.17

Context 20 - see context 19

Context 21 - see context 19

Context 22 - ?fill placed in outbuilding interior immediately after demolition and before robbing of foundation [19] [?1830s]; appears to consist of redeposited earlier material

Description - clayey sand (10YR 4/6)

Stratigraphy - underlies 18; overlies 23

Cross Refs. - Matrix 5.1; Figure 5.7 (not illustrated in plan); Plates 5.16 and 5.17

Context 23 - ?fill placed in outbuilding interior immediately after demolition and before robbing of foundation [19] [?1830s]; appears to consist of redeposited earlier material

Description - loamy sand mottled w/ oxides (10YR 4/4)

Stratigraphy - underlies 22; overlies 27

Cross Refs. - Matrix 5.1; Figure 5.7 (not illustrated in plan); Plates 5.16 and 5.17

Context 24 - garden/yard soil; equivalent to Excavation Unit 1, context 24 and Excavation Unit 1B, context 14 [late 18th/early 19thc]

Description - sandy loam (10YR 4/4)

Stratigraphy - underlies 16; cut by 19; overlies 25

Cross Refs. - Matrix 5.1; Figure 5.7 (not illustrated in plan); Plates 5.15 and 5.16

Context 25 [26] - garden/yard soil; equivalent to Excavation Unit 1, context 29 and Excavation Unit 1B, context 15 [late 18thc]

Description - upper part [25] consists of silty sand (7.5YR 4/2); lower part [26] consists of pebbles and stone fragments in silty sand (10YR 4/4)

Stratigraphy - underlies 24; overlies 28

Cross Refs. - Matrix 5.1; Figure 5.7 (not illustrated in plan); Plates 5.15 and 5.16

APPENDIX B.i. ARCHAEOLOGICAL STRATIGRAPHIC DATA, cont.

Trenton House. Excavation Unit 1A

Context 26 - see context 25

Context 27 - ?construction deposit relating to erection of house [mid-1770s] or outbuilding [late 18thc]; equivalent to [29] outside outbuilding; ?equivalent to Excavation Unit 1, context 37

Description - compact silty clayey sand w/ mortar (7.5YR 5/4)

Stratigraphy - underlies 23; overlies 30

Cross Refs. - Matrix 5.1; Figures 5.4 and 5.7; Plates 5.16 and 5.17

Context 28 - ash deposit; ?occupation debris [late 18thc]

Description - ash w/ charred wood

Stratigraphy - underlies 26, overlies 29

Cross Refs. - Matrix 5.1; Figure 5.7 (not illustrated in plan); Plates 5.15 and 5.16

Context 29 - ?construction deposit relating to erection of house [mid-1770s] or outbuilding [late 18thc]; equivalent to [29] inside outbuilding; ?equivalent to Excavation Unit 1, context 37

Description - compact silty clayey sand w/ mortar (7.5YR 5/4)

Stratigraphy - underlies 28, overlies 31

Cross Refs. - Matrix 5.1; Figures 5.4 and 5.7; Plates 5.15 and 5.16

Context 30 [31] - yard soil; equivalent to Excavation Unit 1, context 40 and Excavation Unit 1B, context 17 [mid-18thc]

Description - silty clay (10YR 4/4)

Stratigraphy - underlies 27, 29; overlies 33

Cross Refs. - Matrix 5.1; Figure 5.7 (not illustrated in plan); Plates 5.15-5.17

Context 31 - see context 30

Context 32 - see context 19

Context 33 - subsoil

Stratigraphy - underlies 30, 31

Description - silty clay (10YR 5/6)

Cross Refs. - Matrix 5.1; Figure 5.7 (not illustrated in plan); Plates 5.15-5.17

Context 34 - see context 4

Context 35 - brick wall, foundation for flooring system in Lido Gardens kitchens; equivalent to Excavation Unit 1, context 2 [c.1910-20 thru late 20thc]

Description - mortared red brick wall, one brick length wide, seven courses deep; top and bottom courses headers, stretchers in between; wood sill on top supports wooden floor joists

Stratigraphy - contained w/in 3; abutted by 1

Cross Refs. - Matrix 5.1; Figures 5.3, 5.4 (shown as Excavation Unit 1, context 2) and 5.7; Plates 5.13-5.17

APPENDIX B.i. ARCHAEOLOGICAL STRATIGRAPHIC DATA, cont.

Trenton House, Excavation Unit 1A

Context 36 - see context 19

Context 37 - yard build-up/fill; equivalent to Excavation Unit 1,
context 8 and Excavation Unit 1B, context 7 [late 19th/early 20thc]

Description - loamy silt (10YR 4/3)

Stratigraphy - underlies 2; overlies 5

Cross Refs. - Matrix 5.1; Figure 5.7 (not illustrated in plan);

Plates 5.15-5.17

Context 38 - see context 19

APPENDIX B.i. ARCHAEOLOGICAL STRATIGRAPHIC DATA, cont.

Trenton House, Excavation Unit 1B

Context 1 - see context 2

Context 2 [1] - brick wall, foundation for porch along south side of south wall of East Hanover Street hotel wing [late 19thc, two phases]

Description - mortared red brick, two brick widths wide, ten courses deep, capped w/ thin mortar/concrete layer, supports six-inch diameter cast iron porch columns (third phase porch feature); masonry of upper three courses is different (all stretchers) and may reflect later raising of porch height; lower seven courses are of single build, top and bottom courses consist of headers, remaining courses all stretchers

Stratigraphy - abutted by 3, 7; owing to mixed character of adjacent rubble no builders trench discernible but wall hypothesized to be in a trench that cut into [9]

Cross Refs. - Matrix 5.1; Figures 5.3, 5.4 and 5.8; Plates 5.28 and 5.20

Context 3 [4] - sub-floor build-up and destruction deposit; equivalent to Excavation Units 1 and 1A, context 1 [mid-/late 20thc]

Description - dry, silty ash, slightly sandy, w/ debris (10YR 5/1); includes rodent burrow [4]

Stratigraphy - abuts 2, 5; overlies 7

Cross Refs. - Matrix 5.1; Figure 5.8 (not illustrated in plan); Plates 5.18-5.20

Context 4 - see context 3

Context 5 - buried top step of stair leading down into basement of East Hanover Street hotel wing [late 19thc, first and second phase porch feature]

Description - dressed stone step; brick step added later when porch level was raised

Stratigraphy - underlies 3; abutted by 7; owing to mixed character of adjacent rubble no builders trench discernible but wall hypothesized to be in a trench that cut into [9]

Cross Refs. - Matrix 5.1; Figure 5.8 (not illustrated in plan); Plate 5.19

Context 6 - see context 7

Context 7 [6] - yard build-up/fill; equivalent to Excavation Unit 1, context 8 and Excavation Unit 1A, contexts 2 and 37 [late 19th/early 20thc]

Description - compact sand w/ pebbles (5YR 3/4); includes rodent hole [6]

Stratigraphy - underlies 3; abuts 2, 5; overlies 9

Cross Refs. - Matrix 5.1; Figure 5.8 (not illustrated in plan); Plates 5.19 and 5.20

APPENDIX B.i. ARCHAEOLOGICAL STRATIGRAPHIC DATA, cont.

Trenton House, Excavation Unit 1B

Context 8 - see context 9

Context 9 [8, 10, 11] - rubble fill/?yard build-up; equivalent to Excavation Unit 1, context 11 and Excavation Unit 1A, context 5 [mid-19thc]

Description - compact sandy loam w/ gravel, pebbles and brick, stone and mortar debris (10YR 4/4); [11] is dense concentration of rubble towards base of context

Stratigraphy - underlies 7; overlies 12

Cross Refs. - Matrix 5.1; Figure 5.8 (not illustrated in plan); Plates 5.19 and 5.20

Context 10 - see context 9

Context 11 - see context 9

Context 12 - brick walk, partially robbed; equivalent to Excavation Unit 1, context 20 [early 19thc]

Description - dry-laid red brick surface, ?handmade bricks, one course deep; bricks laid diagonal to long axis of path with path edge defined by a single line of bricks laid lengthwise parallel to the long axis of the path

Stratigraphy - underlies 9; overlies 13

Cross Refs. - Matrix 5.1; Figures 5.3 and 5.8; Plates 5.19 and 5.20

Context 13 - sand bedding for brick walk [12]; equivalent to Excavation Unit 1, contexts 22 and 27 [early 19thc]

Description - coarse sand (10YR 3/6)

Stratigraphy - underlies 12; overlies 14

Cross Refs. - Matrix 5.1; Figures 5.3 and 5.8; Plates 5.19 and 5.20

Context 14 - garden/yard soil; equivalent to Excavation Unit 1, context 24 and Excavation Unit 1A, context 24 [late 18th/early 19thc]

Description - loam w/ gravel (10YR 3/6)

Stratigraphy - underlies 13; overlies 15

Cross Refs. - Matrix 5.1; Figures 5.3 and 5.8; Plates 5.19 and 5.20

Context 15 - garden/yard soil; equivalent to Excavation Unit 1, context 29 and Excavation Unit 1A, context 25 [late 18thc]

Description - silty loam w/ debris, brick, shell, bones, pebbles (10YR 3/6)

Stratigraphy - underlies 14; overlies 16

Cross Refs. - Matrix 5.1; Figure 5.8 (not illustrated in plan)

APPENDIX B.i. ARCHAEOLOGICAL STRATIGRAPHIC DATA, cont.

Trenton House. Excavation Unit 1B

Context 16 - construction deposit relating to erection of house [mid-1770s] or outbuilding; equivalent to Excavation Unit 1, context 36 [late 18thc]

Description - silty loam (10YR 4/6) w/ brick and compact white, gray, yellow mortar

Stratigraphy - underlies 15; overlies 17

Cross Refs. - Matrix 5.1; Figures 5.4 and 5.8; Plate 5.20

Context 17 [18] - yard soil; equivalent to Excavation Unit 1, context 40 and Excavation Unit 1A, context 30 [mid-18thc]

Description - loam (10YR 3/6); contains possible plow scar [20]

Stratigraphy - underlies 16; overlies 19, 20

Cross Refs. - Matrix 5.1; Figures 5.4 and 5.8; Plates 5.19 and 5.20

Context 18 - see context 17

Context 19 - subsoil

Description - clayey silt (10YR 5/6)

Stratigraphy - underlies 17, 20

Cross Refs. - Matrix 5.1; Figure 5.8 (not illustrated in plan); Plates 5.19 and 5.20

Context 20 - ?plow scar; equivalent to Excavation Unit 1, context 47 [mid-18thc]

Description - loam (7.10YR 3/6)

Stratigraphy - underlies 17, 18; cuts 19

Cross Refs. - Matrix 5.1; Figures 5.4 and 5.8; Plates 5.19 and 5.20

APPENDIX B.i. ARCHAEOLOGICAL STRATIGRAPHIC DATA, cont.

Trenton House, Excavation Unit 2

Context 1 - sub-floor build-up and destruction deposit; equivalent to Excavation Units 2A and 2B, context 1 [mid-/late 20thc]
Description - dry silty ash, slightly sandy w/ stones, burnt boards, nails and other building debris; sawdust in NW corner; band of dark grey silty sand at base (10YR 4/2, 2.5Y 4/2)
Stratigraphy - abuts 2, 4, 6; overlies 3, 5, 7, 8, 15
Cross Refs. - Matrix 5.2; Figures 5.9-5.11; Plate 5.23

Context 2 - brick wall, foundation for flooring system in Lido Gardens back room; equivalent to Excavation Unit 2A, context 2 [c.1910-20 thru late 20thc]
Description - mortared red brick wall, one brick length wide; top course of headers over six courses of stretchers over base course of headers (some on edge); wood sill on top
Stratigraphy - abutted by 1; contained w/in 3
Cross Refs. - Matrix 5.2; Figures 5.9-5.11; Plates 5.21, 5.22, 5.27 and 5.28

Context 3 - builders trench for foundation [2]; equivalent to Excavation Unit 2A, context 29 [c.1910-20]
Description - mottled sandy silt with construction debris (stone, brick, pebbles) (10YR 4/3, 5YR 5/3)
Stratigraphy - underlies 1; contains 2; cuts 8
Cross Refs. - Matrix 5.2; Figures 5.10 and 5.11
(not illustrated in plan)

Context 4 - brick wall, foundation for flooring system in Lido Gardens back room, applied against earlier porch foundation; equivalent to Excavation Unit 2A, context 4 [Excavation Unit 2B, context 3] [c.1910-20 thru late 20thc]
Description - mortared red brick wall, one brick length wide; top course of headers (some on edge) over eight courses of stretchers; concrete at base of wall at W end; wood sill on top
Stratigraphy - abutted by 1; contained w/in 5; abuts 10 [Excavation Unit 2B]
Cross Refs. - Matrix 5.2; Figures 5.9-5.13; Plates 5.22, 5.23 and 5.25-5.29

Context 5 - builders trench for foundation [4]; equivalent to Excavation Unit 2A, context 5 [c.1910-20]
Description - mottled sandy silt (10YR 4/4, 10YR 5/4) with construction debris (brick, mortar) and coarse sand (7.5YR 5/6)
Stratigraphy - underlies 1; contains 4; cuts 8
Cross Refs. - Matrix 5.2; Figures 5.10 and 5.11
(not illustrated in plan); Plate 5.23

APPENDIX B.i. ARCHAEOLOGICAL STRATIGRAPHIC DATA, cont.

Trenton House, Excavation Unit 2

Context 6 - concrete-capped brick wall, foundation for flooring system and first-floor wall in Lido Gardens back room, applied against earlier brick wall of ice house and yard [c. 1910-20 thru late 20thc]

Description - mortared red brick foundation, ?one brick width wide, top two courses are concrete covered, below these are one course of headers, two courses stretchers, two courses headers and four courses stretchers; crack in foundation and wall bows out slightly; concrete at base of wall at W end; foundation supports cinder block wall at first-floor level

Stratigraphy - abutted by 1; contained w/in 7; abuts 9

Cross Refs. - Matrix 5.2; Figures 5.9 and 5.10

Context 7 - builders trench for brick foundation [6] [c.1910-20]

Description - mottled clayey, silty sand with construction debris (stones, brick) (10YR 3/3, 10YR 4/3, 10YR 5/2)

Stratigraphy - underlies 1; contains 6; cuts 8

Cross Refs. - Matrix 5.2; Figures 5.9 and 5.10

Context 8 - construction deposit; equivalent to Excavation Unit 2A, context 6 [c.1910-20]

Description - coarse sand with iron oxide, some coal and ash (10YR 5/8)

Stratigraphy - underlies 1; cut by 3, 5, 7, 15; overlies 11

Cross Refs. - Matrix 5.2; Figures 5.10 and 5.11 (not illustrated in plan); Plates 5.22 and 5.23

Context 9 - brick wall, south wall of ice house and south wall of Trenton House yard [c.1835 thru late 20thc]

Description - mortared red brick wall, two brick widths wide, south side of wall facing 16 North Warren Street shows evidence of slate gable roof for ice house structure; join between southwest corner of ice house and south wall of Trenton House yard also identifiable

Stratigraphy - abutted by 6

Cross Refs. - Matrix 5.2; Figures 5.9 and 5.10

Context 10 - see context 3, Excavation Unit 2B

Context 11 - fill/yard build-up [c.1890-1910]

Description - mottled dry sandy silt (10YR 5/4, 7.5YR 4/4, 5YR 5/6)

Stratigraphy - underlies 8; overlies 12, 13

Cross Refs. - Matrix 5.2; Figure 5.10 and 5.11 (not illustrated in plan); Plates 5.22 and 5.23

Context 12 - fill/yard build-up [c.1890-1910]

Description - mottled, compact silt with pockets of chloritic clay (10YR 6/3, 10YR 6/4)

Stratigraphy - underlies 11; overlies 14

Cross Refs. - Matrix 5.2; Figures 5.10 and 5.11 (not illustrated in plan); Plate 5.23

APPENDIX B.i. ARCHAEOLOGICAL STRATIGRAPHIC DATA, cont.

Trenton House, Excavation Unit 2

Context 13 - ash deposit, disturbed [c.1890-1910]

Description - coal ash mottled with coarse sand (10YR 5/8) [8]
and dark brown loam; some ceramic wasters

Stratigraphy - underlies 11; ?cuts 16

Cross Refs. - Matrix 5.2; Figure 5.9 (not illustrated in profile);
Plate 5.22

Context 14 [17] - ash deposit/fill [c.1890-1910]

Description - ash with ceramic wasters; some brown loam [17]

Stratigraphy - underlies 12; overlies 20, 22

Cross Refs. - Matrix 5.2; Figures 5.10 and 5.11
(not illustrated in plan); Plate 5.23

Context 15 - trash deposit w/ bottles; equivalent to Excavation
Unit 2A, context 9 [early 20thc]

Description - sandy silt with bottles (10YR 4/1)

Stratigraphy - underlies 1; cuts 8

Cross Refs. - Matrix 5.2; Figure 5.11 (not illustrated in plan)

Context 16 - fill layer in top of and immediately above ice house
equivalent to Excavation Unit 2A, context 11 [c.1890-1910]

Description - mottled clay loam, coarse sand, silty sand, with
pebbles, stones, decaying rock, pockets of chloritic clay
(10YR 5/4, 7.5YR 4/4, 10YR 6/4, 5YR 5/2)

Stratigraphy - underlies 12; cut by 13; abuts 25; overlies 19

Cross Refs. - Matrix 5.2; Figures 5.10 and 5.11; Plates 5.22, 5.25,
5.27 and 5.28

Context 17 - see context 14

Context 18 - yard build-up/fill adjacent to and on top of
ice house entry [c.1890-1910]

Description - mottled sandy, silty loam with debris, brick (5YR 5/3)

Stratigraphy - underlies 20; overlies 21, 24

Cross Refs. - Matrix 5.2; Figures 5.10 and 5.11
(not illustrated in plan); Plate 5.23

Context 19 - upper fill w/in ice house; ?equivalent to Excavation
Unit 2A, context 19 [c.1890-1910]

Description - mottled sandy, clayey silt stones, decaying red
sandstone, pockets of chloritic clay, (7.5 YR 4/4, 7.5 YR 5/4,
10 YR 5/4)

Stratigraphy - underlies 16; abuts 52; overlies 23

Cross Refs. - Matrix 5.2; Figures 5.9 and 5.10; Plate 5.25

Context 20 - yard build-up/fill adjacent to ice house [c.1890-1910]

Description - fine sand, possibly sieved mortar sand (10YR 6/4)

Stratigraphy - underlies 14; overlies 18

Cross Refs. - Matrix 5.2; Figure 5.10 (not illustrated in plan)

APPENDIX B.i. ARCHAEOLOGICAL STRATIGRAPHIC DATA, cont.

Trenton House, Excavation Unit 2

Context 21 - ash deposit; ?related to modification of upper portion of ice house foundation (to allow for insertion of drain) after ice house goes out of use [c.1890-1910]

Description - furnace coal ash

Stratigraphy - underlies 18; ?cuts 26

Cross Refs. - Matrix 5.2; not illustrated

Context 22 - ash deposit; yard build-up/fill [c.1890-1910]

Description - coal ash, 8 1/2" diameter pocket contained w/in context 24; matrix similar to context 14

Stratigraphy - underlies 14; overlies 24

Cross Refs. - Matrix 5.2; not illustrated

Context 23 [a-f] - various fill deposits within ice house; equivalent to Excavation Unit 2A, context 23 [c.1890]

Description -

- (a) coarse sand w/ rock chips, gravel, (5YR 5/2)
- (b) coarse sand (10YR 6/4)
- (c) furnace cinder, ash, ceramic wasters
- (d) silty loam with debris (brick fragments, pebbles) (10YR 6/4)
- (e) furnace cinder, ash, ceramic wasters
- (f) silty sand with destruction debris (bricks, mortar, stone) (10YR 5/4)

Stratigraphy - underlies 19; abuts 52; overlies 51

Cross Refs. - Matrix 5.2; Figures 5.9 and 5.11

Context 24 [28] - yard fill and upper fill of trench for drain pipe inserted into ice house foundation after ice house was converted into septic; includes ash with brown loam [28] which was not excavated [c.1890-1910]

Description - silty sand with debris (brick fragments, grit) (7.5YR 4/4)

Stratigraphy - underlies 18, 22; abuts 25; overlies 26, 28

Cross Refs. - Matrix 5.2; Figures 5.9 and 5.10; Plates 5.25-5.28

Context 25 - stone wall; rebuilt upper part of northwest corner of ice house wall; rebuilding occurred when drain pipe was inserted into ice house foundation after ice house was converted into septic [c.1890-1910]

Description - mortared stone wall, 1' 9" wide, cut stone w/ finished interior faces, upper surface entirely covered w/ mortar

Stratigraphy - underlies 16; abutted by 24, 26; overlies 50, 52

Cross Refs. - Matrix 5.2; Figures 5.9 and 5.10; Plates 5.23 and 5.25-5.29

APPENDIX B.i. ARCHAEOLOGICAL STRATIGRAPHIC DATA, cont.

Trenton House, Excavation Unit 2

Context 26 [32], [35], [36], [41] - trench for drain pipe inserted into ice house foundation after ice house was converted into septic; contains terra cotta pipe [53] [c.1890-1910]
Description - sandy silt and clay mottled w/ clayey silt, sandy clay, brick, mortar, stone, ash (7.5 YR 5/4, 10YR 4/6)
Stratigraphy - underlies 21, 24; contains 53; cuts 27, 29; abuts 25
Cross Refs. - Matrix 5.2; Figures 5.9, 5.10 and 5.13; Plates 5.25-5.28

Context 27 [29] - yard build-up/garden soil; equivalent to Excavation Unit 2B, context 6 [mid-19thc]
Description - sandy silt very mixed with mortar, brick, ash, pebbles (7.5YR 4/4)
Stratigraphy - underlies 24; cut by 24, 26; abuts 50; overlies 30, 54
Cross Refs. - Matrix 5.2; Figure 5.10 (not illustrated in plan)

Context 28 (unexcavated) - see context 24
Context 29 - see context 27

Context 30 - trench for terra-cotta pipe [55] which drains SW towards ice house; drain predates ice house as it is cut by builders trench for ice house foundation [33] [early 19thc]
Description - silty sand w/ pebbles (7.5YR 4/4)
Stratigraphy - underlies 27, 29; contains 55; cut by 33; cuts 31; overlies 37
Cross Refs. - Matrix 5.2; Figure 5.9 (not illustrated in profile)

Context 31 - trash lens
Description - moist silty sand w/ bones, stones (7.5YR 4/2)
Stratigraphy - underlies 30; overlies 37
Cross Refs. - Matrix 5.2; not illustrated

Context 32 - see context 26

Context 33 - builders trench for ice house wall; ?equivalent to Excavation Unit 2A, context 24 [c.1835]
Description - slightly clayey sand w/ ash, pebbles (10YR 4/4)
Stratigraphy - cut by 26; contains 52, ?50; ?cuts 30
Cross Refs. - Matrix 5.2; Figures 5.9 and 5.10; Plates 5.25, 5.26

Context 34 - ?bedding for yard surface [54] and brick path [Excavation Unit 2B, context 12]; equivalent to Excavation Unit 2B, context 13 [early 19thc]
Description - silty sand w/ pebbles (10YR 4/3)
Stratigraphy - underlies 27, 54; overlies 37
Cross Refs. - Matrix 5.2; Figures 5.9 and 5.10; Plates 5.25-5.29

Context 35 - see context 26
Context 36 - see context 26

APPENDIX B.i. ARCHAEOLOGICAL STRATIGRAPHIC DATA, cont.

Trenton House, Excavation Unit 2

Context 37 [38] - yard build-up/garden soil; equivalent to
Excavation Unit 2B, context 22 [early 19thc]
Description - very mottled silty sand w/ stones and concentrations
of pebbles (7.5YR 4/4)
Stratigraphy - underlies 31, 34; overlies 39
Cross Refs. - Matrix 5.2; Figure 5.10 (not illustrated in plan);
Plates 5.23, 5.25-5.29

Context 38 - see context 37

Context 39 [42] [43] [44] - yard build-up/garden soil; equivalent to
Excavation Unit 2B, context 23 [late 18th/early 19thc]
Description - sandy clayey silt w/ orange mottling and streaks of
rusty brown, brick flecks, charcoal, pebbles; context 43 includes
concentration of stones, mica schist [context 43] (10YR 3/4,
5YR 4/2, 5YR 4/3, 7.5YR 4/4)
Stratigraphy - underlies 38; cut by 45; overlies 47
Cross Refs. - Matrix 5.2; Figures 5.10 and 5.13
(not illustrated in plan); Plates 5.23 and 5.26-5.29

Context 40 - brick drain; flow is from NW to SE; (probably originally
fed cistern on site of later ice house [early 19thc])
Description - mortared red brick; five courses deep w/ two-inch deep
mortar base and a mortar top covering; base is 18" wide consisting
of one stretcher w/ a half-stretcher on either side; each side
consists of three courses, one brick width wide, w/ six-inch gap
between; top of drain consists of series of bricks laid sideways
across the two sides; some bricks glazed; mortar is gray, sandy w/
lime specks
Stratigraphy - cut by 33; contained w/in 45; contains 46
Cross Refs. - Matrix 5.2; Figures 5.9 and 5.13; Plates 5.25-5.29

Context 41 - see context 26
Context 42 - see context 39
Context 43 - see context 39
Context 44 - see context 39

Context 45 - builders trench for brick drain [early 19thc]
Description - mottled slightly sandy clayey silt w/ debris, pebbles
(10YR 3/4, 5YR 4/2)
Stratigraphy - underlies 38; cut by 33; cuts 39; contains 40
Cross Refs. - Matrix 5.2; Figures 5.9 and 5.13; Plates 5.25-5.29

Context 46 - fill of brick drain [early 19thc]
Description - very fine silty sand w/ debris (10YR 3/4);
1.5" of fill is a metal conglomerate w/ debris (?drain
may have contained metal pipe)
Stratigraphy - cut by 33; contained w/in 40
Cross Refs. - Matrix 5.2; Figures 5.9 and 5.13; Plate 5.26

APPENDIX B.i. ARCHAEOLOGICAL STRATIGRAPHIC DATA, cont.

Trenton House, Excavation Unit 2

Context 47 - ?redeposited subsoil/early construction deposit [?1770s]

Description - slightly clayey sandy silt (10YR 3/4, 7.5YR 5/4)

Stratigraphy - underlies 39; overlies 48

Cross Refs. - Matrix 5.2; Figures 5.9 and 5.13; Plates 5.23
and 5.25-5.29

Context 48 - yard soil; equivalent to Excavation Unit 2B,
contexts 24 and ?26 [mid-18thc]

Description - slightly clayey sand w/ some fine sand; includes
small deposit of shell, brick and stone (7.5YR 4/4)

Stratigraphy - underlies 47; overlies 49

Cross Refs. - Matrix 5.2; Figures 5.9, 5.10 and 5.13; Plates 5.23
and 5.25-5.29

Context 49 - subsoil

Description - very clayey silt (7.5YR 5/4); shovel test exposed
cobbles, stones, pebbles, gravels at greater depth

Stratigraphy - underlies 47, 48; cut by 33

Cross Refs. - Matrix 5.2; Figures 5.10 and 5.13; Plates 5.23, 5.24
and 5.26-5.29

Context 50 - stone wall, west wall of ice house entrance; equivalent
to Excavation Unit 2A, context 16 [c.1835]

Description - mortared stone wall, small stone fragments,
some brick chips in mortar; upper courses of wall not properly
bonded w/ north wall of ice house [25]

Stratigraphy - underlies 18; cut by 5; abutted by 25, 26, 27;

?laid w/in 33 (builders trench not discernible); bonded into 52
Cross Refs. - Matrix 5.2; Figures 5.9 and 5.11; Plates 5.23, 5.26,
5.28 and 5.29

Context 51 - ice house floor (observed after demolition) [c.1835]

Description - coarse sand and gravel (10YR 4/3)

Stratigraphy - underlies 23; abuts 52

Cross Refs. - Matrix 5.2; Figure 5.9; Plate 5.24

Context 52 - north and west stone walls of ice house; equivalent to
Excavation Unit 2A, context 10 [c.1835]

Description - dry-laid stone wall w/ stone chinking;
defines structure 25 x 16'

Stratigraphy - underlies 25; contained w/in 33; abutted by 23, 51;
bonded into 50

Cross Refs. - Matrix 5.2; Figures 5.9-5.11; Plates 5.22-5.29

APPENDIX B.i. ARCHAEOLOGICAL STRATIGRAPHIC DATA, cont.

Trenton House. Excavation Unit 2

Context 53 - terra-cotta drain pipe feeding into ice house following its abandonment [c.1890-1910]

Description - two sections of pipe: one which passes through ice house wall [25] is thick bodied w/ purplish brown (manganese?) glaze; adjoining section outside ice house is a smaller reddish brown (lead?) glazed pipe attached w/ mortar/concrete

Stratigraphy - contained w/ in 26

Cross Refs. - Matrix 5.2; Figures 5.9 and 5.10; Plate 5.25 and 5.26

Context 54 - yard or path surface; contemporary w/ Excavation Unit 2B, context 12 [early 19thc]

Description - irregularly-shaped rectangular mica schist slab, at least 5 x 2' (not fully exposed), 6" thick

Stratigraphy - underlies 27; overlies 34

Cross Refs. - Matrix 5.2; Figures 5.9 and 5.10; Plates 5.25-5.29

Context 55 - terra-cotta drain pipe; flow is from NE to SW; probably originally fed cistern on site of later ice house [early 19thc].

Description - terra-cotta pipe

Stratigraphy - contained w/ in 30

Cross Refs/ - Matrix 5.2; Figure 5.9 (not illustrated in profile)

APPENDIX B.1. ARCHAEOLOGICAL STRATIGRAPHIC DATA, cont.

Trenton House, Excavation Unit 2A

Context 1 - sub-floor build-up and destruction deposit; equivalent to Excavation Units 2 and 2A, context 1 [mid-/late 20thc]
Description - dry silty ash, slightly sandy w/ stones, burnt boards, nails and other building debris (10YR 4/2, 2.5YR 4/2)
Stratigraphy - abuts 2, 4; overlies 3, 5, 8, 29
Cross Refs. - Matrix 5.2; Figure 5.11 (not illustrated in plan); Plates 5.27-5.29

Context 2 - brick wall, foundation for flooring system in Lido Gardens back room; equivalent to Excavation Unit 2, context 2 [c.1910-20 thru late 20thc]
Description - see Excavation Unit 2, context 2
Stratigraphy - abutted by 1; contained w/in 29
Cross Refs. - Matrix 5.2; Figure 5.9-5.11; Plates 5.27 and 5.28

Context 3 - fill [c.1910-20]
Description - silt w/ flakey gravel, ash (10YR 3/3)
Stratigraphy - underlies 1; cut by 5, 29; overlies 6, 7, 9, 12
Cross Refs. - Matrix 5.2; not illustrated

Context 4 - brick wall, foundation for flooring system in Lido Gardens back room; equivalent to Excavation Unit 2, context 4 [c.1910-20 thru late 20thc]
Description - see Excavation Unit 2, context 4
Stratigraphy - abutted by 1; contained w/in 5
Cross Refs. - Matrix 5.2; Matrix 5.9-5.11; Plates 5.27-5.29

Context 5 - builders trench for foundation [4]; equivalent to Excavation Unit 2, context 5 [c.1910-1920]
Description - see Excavation 2, context 5
Stratigraphy - underlies 1; contains 4; cuts 3
Cross Refs. - Matrix 5.2; Figures 5.10 and 5.11 (not illustrated in plan)

Context 6 - construction deposit; equivalent to Excavation Unit 2, context 8 [c.1910-20]
Description - see Excavation Unit 2, context 8
Stratigraphy - underlies 3, 9, 12; cut by 7, 9, 12; overlies 11
Cross Refs. - Matrix 5.2; Figures 5.10 and 5.11 (not illustrated in plan); Plate 5.27

Context 7 - pipe trench for iron pipe [c.1910-20]
Description - dry silt w/ some debris, brick (10YR 3/3); contains a vertical section of iron piping, pipe enters unit horizontally from E
Stratigraphy - underlies 3; cuts 6
Cross Refs. - Matrix 5.2; not illustrated in plan or profile; Plate 5.27

APPENDIX B.i. ARCHAEOLOGICAL STRATIGRAPHIC DATA, cont.

Trenton House, Excavation Unit 2A

Context 8 - fill [mid-20thc]

Description - dry silty sand w/ flakey gravel (10YR 4/3)

Stratigraphy - underlies 1; overlies 6

Cross Refs. - Matrix 5.2; not illustrated

Context 9 - trash deposit w/ bottles; equivalent to Excavation Unit 2, context 15 [early 20thc]

Description - see Excavation Unit 2, context 15

Stratigraphy - underlies 3; cuts 6

Cross Refs. - Matrix 5.2; Figure 5.11 (not illustrated in plan)

Context 10 [25] - north wall of ice house at base of entrance; equivalent to Excavation Unit 2, context 52 [c.1835]

Description - dry-laid stone wall; wall would have supported door sill for ice house entrance; top of wall is six feet below top of entrance

Stratigraphy - abutted by 28; contained w/in 24

Cross Refs. - Matrix 5.2; Figure 5.9 (not illustrated in profile); Plates 5.28 and 5.29

Context 11 [13] [17] [18] - upper fill w/in ice house entrance; equivalent to Excavation Unit 2, context 16 [c.1890-1910]

Description - dry, friable loam (10YR 5/4); patch of brick and mortar [13]; some lenses of mottled clay (10YR 5/6, 5GY 6/1) [17]; concentrations of pebbles at lower depths [18]

Stratigraphy - underlies 6; abuts 14, 16; overlies 15

Cross Refs. - Matrix 5.2; not illustrated

Context 12 - ash deposit [early/mid-20thc]

Description - see Excavation Unit 2, context 14

Stratigraphy - underlies 3; overlies 6, 13

Cross Refs. - Matrix 5.2; not illustrated

Context 13 - see context 11

Context 14 - north wall of ice house entrance [c.1835]

Description - mortared wall of dressed stone topped w/ mortared red brick (possibly a later modification)

Stratigraphy - underlies 13; abutted by 28; ?bonded into 16; overlies 26 (no builders trench discernible)

Cross Refs. - Matrix 5.2; Figure 5.9 (not illustrated in profile); Plates 5.27-5.29

Context 15 - fill w/in ice house entrance [c.1890-1910]

Description - dry, friable loam w/ some debris, water rounded pebbles (10YR 5/4)

Stratigraphy - underlies 11; overlies 19

Cross Refs. - Matrix 5.2; not illustrated

APPENDIX B.i. ARCHAEOLOGICAL STRATIGRAPHIC DATA, cont.

Trenton House, Excavation Unit 2A

Context 16 - west wall of ice house entrance; equivalent to
Excavation Unit 2, context 50 [c.1835]

Description - mortared stone wall topped w/ mortared red brick
(possibly a later modification)

Stratigraphy - abutted by 28; abuts 10; contained w/in 24

Cross Refs. - Matrix 5.2; Figures 5.9 and 5.11; Plates 5.27-5.29

Context 17 - see context 11

Context 18 - see context 11

Context 19 - fill w/in ice house entrance; ?equivalent to Excavation
Unit 2, context 19 [c.1890-1910]

Description - mottled gravel, clay, stones, sand (10YR 3/4)

Stratigraphy - underlies 15; overlies 20

Cross Refs. - Matrix 5.2; not illustrated

Context 20 [27] - fill w/in ice house entrance [c.1890-1910]

Description - clayey loam w/ angular rocks, sand (10YR 4/6, 10YR 6/6)

Stratigraphy - underlies 19; overlies 21

Drwaing refs. - Matrix 5.2; not illustrated

Context 21 - fill w/in ice house entrance [c.1890]

Description - ash w/ shell (10YR 3/2)

Stratigraphy - underlies 20; overlies 22

Cross Refs. - Matrix 5.2; not illustrated

Context 22 - fill w/in ice house entrance [c.1890]

Description - coarse sand w/ debris, large rocks, lime particles
(10YR 5/4)

Stratigraphy - underlies 21; overlies 23

Cross Refs. - Matrix 5.2; not illustrated

Context 23 - destruction deposit/fill w/in ice house entrance;
equivalent to Excavation Unit 2, context 23 [c.1890]

Description - ash w/ brick, rocks

Stratigraphy - underlies 22; overlies 28

Cross Refs. - Matrix 5.2; not illustrated

Context 24 - builders trench for ice house wall [10, 16, 25];

?equivalent to Excavation Unit 2, context 33 [c.1835]

Description - slighty clayey sand w/ pebbles (10YR 3/3)

Stratigraphy - cuts 26; contains 10, 16, 25

Cross Refs. - Matrix 5.2; Figure 5.9 (not illustrated in profile)

APPENDIX B.i. ARCHAEOLOGICAL STRATIGRAPHIC DATA, cont.

Trenton House, Excavation Unit 2A

Context 25 - see context 10

Context 26 - subsoil

Description - wet sandy gravelly clay (10YR 4/3)

Stratigraphy - underlies 28; cut by 24

Cross Refs. - Matrix 5.2; Figure 5.9 (not illustrated in profile);
Plates 5.28 and 5.29

Context 27 - see context 20

Context 28 - bottom fill w/in ice house entrance [?mid-19thc]

Description - coarse sand w/ debris, large rocks, lime particles

Stratigraphy - underlies 23; abuts 14, 16; overlies 24, 26

Cross Refs. - Matrix 5.2; not illustrated

Context 29 - builders trench for brick foundation [2];
equivalent to Excavation Unit 2, context 3 [c.1910-20]

Description - mottled sandy silt w/ construction debris
(stone, brick, pebbles) (10YR 4/3, 5YR 5/3)

Stratigraphy - underlies 1; contains 2; cuts 3

Cross Refs. - Matrix 5.2; not illustrated

APPENDIX B.i. ARCHAEOLOGICAL STRATIGRAPHIC DATA, cont.

Trenton House, Excavation Unit 2B

Context 1 - sub-floor build-up and construction deposit; equivalent to Excavation Units 2 and 2A, context 1 [mid-/late 20thc]
Description - dry silty ash, slightly sandy w/ stones, burnt boards, nails and other building debris (10YR 4/2, 2.5YR 4/2)
Stratigraphy - overlies 4
Cross Refs. - Matrix 5.2; Figure 5.10 (not illustrated in plan); Plates 5.30-5.32

Context 2 - stone wall, foundation for south wall of East Hanover Street hotel wing [mid-1850s]
Description - mortared stone wall, two feet wide, upper portion mortared
Stratigraphy - abutted by 7; contained w/in 8
Cross Refs. - Matrix 5.2; Figures 5.9 and 5.10; Plates 5.30-5.32

Context 3 - brick wall, foundation for porch along south side of south wall of East Hanover Street hotel wing [late 19thc, two phases]
Description - mortared red brick, two brick widths wide, 12 courses deep, capped w/ thin mortar/concrete layer; supports six-inch diameter cast iron porch column (third phase porch feature); masonry of upper three courses is different (all stretchers) and may reflect later raising of porch height; lower nine courses are of single build, top and bottom courses consist of headers, remaining courses all stretchers; wall encloses sandstone pillar [30] (probably from original mid-1850s porch)
Stratigraphy - abutted by 5 and Excavation Units 2 and 2A, context 4; contained w/in 29; abuts 30
Cross Refs. - Matrix 5.2; Figures 5.9, 5.10 and 5.12; Plates 5.30, 5.31 and 5.33

Context 4 - fill [early 20thc]
Description - silty sand w/ brick (10YR 5/4)
Stratigraphy - underlies 1; overlies 5, 25
Cross Refs. - Matrix 5.2; Figure 5.10 (not illustrated in plan); Plates 5.32 and 5.33

Context 5 - fill [early 20thc]
Description - ash w/ coal, sand, crushed shell
Stratigraphy - underlies 4; cut by 25; abuts 3; overlies 7
Cross Refs. - Matrix 5.2; Figure 5.10 (not illustrated in plan); Plates 5.32 and 5.33

APPENDIX B.i. ARCHAEOLOGICAL STRATIGRAPHIC DATA, cont.

Trenton House, Excavation Unit 2B

- Context 6 - yard build-up/fill; equivalent to Excavation Unit 2, context 27 [mid-19thc]
Description - mottled sand, clay, clayey silt w/ gravel (10YR 4/3, 10YR 3/6)
Stratigraphy - underlies 7; cut by 8, 11 (cut barely discernible), 29; overlies 9
Cross Refs. - Matrix 5.2; Figure 5.10 (not illustrated in plan); Plates 5.30-5.33
- Context 7 - brick surface, ?disturbed remnant of final phase porch floor [late 19thc]
Description - unmortared red brick
Stratigraphy - underlies 5; abuts 2; overlies 6, 8, ?11
Cross Refs. - Matrix 5.2; Figure 5.10 (not illustrated in plan); Plates 5.30-5.32
- Context 8 [19] - builders trench for stone foundation [2] for south wall of East Hanover Street hotel wing [mid-1850s]
Description - mottled silty sand, sandy clay w/ debris, pebbles; includes a layer of compact granular lime
Stratigraphy - underlies 7; contains 2; cuts 6
Cross Refs. - Matrix 5.2; Figures 5.9 and 5.10; Plates 5.30-5.32
- Context 9 [15] - drain flowing WSW [mid-/late 19thc]
Description - mortared red brick; top and bottom of drain consist of bricks laid sideways; sides of drain consist of bricks set on long edge; interior of drain is approx. six inches across by four inches high
Stratigraphy - contained w/in 11; contains 14
Cross Refs. - Matrix 5.2; Figures 5.9 and 5.10; Plates 5.30-5.32
- Context 10 - ash deposit [mid-19thc]
Description - ash w/ charcoal, brick, shell
Stratigraphy - underlies 6; overlies 22
Cross Refs. - Matrix 5.2; Figure 5.10 (not illustrated in plan); Plate 5.32
- Context 11 [18] - builders trench for brick drain [9] [mid-/late 19thc]
Description - silty loam w/ gravel (10YR 4/3); sand bedding (10YR 5/2) [18] underlies drain
Stratigraphy - cuts 6 (indistinct), 12; contains 9
Cross Refs. - Matrix 5.2; Figures 5.9 and 5.10; Plates 5.30-5.32
- Context 12 - remnant of brick path; ?contemporary w/ Excavation Unit 2, context 54 [early 19thc]
Description - unmortared red brick surface, one course deep
Stratigraphy - underlies 6; cut by 11, 29; overlies 13
Cross Refs. - Matrix 5.2; Figures 5.9 and 5.10; Plates 5.30, 5.32 and 5.33

APPENDIX B.i. ARCHAEOLOGICAL STRATIGRAPHIC DATA, cont.

Trenton House, Excavation Unit 2B

Context 13 - base for brick path [12]; equivalent to Excavation Unit 2, context 34 [early 19thc]

Description - mottled sand (10YR 5/4, 10YR 5/6)

Stratigraphy - underlies 12; overlies 22

Cross Refs. - Matrix 5.2; Figure 5.10 (not illustrated in plan); Plates 5.32 and 5.33

Context 14 - drain fill [mid-/late 19thc]

Description - sand (7.5YR 4/2)

Stratigraphy - contained w/in 9

Cross Refs. - Matrix 5.2; Figure 5.10 (not illustrated in plan); Plate 5.32

Context 15 - see context 9

Context 16 - see context 22

Context 17 - see context 22

Context 18 - see context 11

Context 19 - see context 8

Context 20 - ?post hole [?mid-19thc]

Description - slightly clayey sand w/ cobbles, pebbles (5YR 4/4)

Stratigraphy - ?underlies 10; cuts 22

Cross Refs. - Matrix 5.2; not illustrated

Context 21 - see context 22

Context 22 [16] [17] [21] - yard build-up/fill and ?construction deposit; equivalent to Excavation Unit 2, context 37 [early 19thc]

Description - sandy silt w/ brown streaks, some pebble patches, charcoal streaks, clayey sand (7.5 YR 3/4, 7.5YR 4/2, 7.5 YR 4/4); includes mottled sand (10YR 5/3) [16] and slightly clayey sand (5YR 4/4) w/ pebbles, cobbles, mica schist [17]

Stratigraphy - underlies 10, 13; cut by 20; overlies 23

Cross Refs. - Matrix 5.2; Figures 5.10 and 5.12 (not illustrated in plan); Plates 5.30-5.33

Context 23 - yard soil; equivalent to Excavation Unit 2, context 39 [late 18thc]

Description - clayey silty loam (7.5YR 4/2, 5YR 4/4, 10YR 4/4)

Stratigraphy - underlies 22; overlies 26

Cross Refs. - Matrix 5.2; Figures 5.10 and 5.12 (not illustrated in plan); Plates 5.30-5.33

Context 24 - yard soil; equivalent to Excavation Unit 2, context 48 [mid-/late 18thc]

Description - clayey silty loam, pebbly in SW corner (10YR 4/4)

Stratigraphy - underlies 23; cut by 26; overlies 27

Cross Refs. - Matrix 5.2; Figures 5.9, 5.10 and 5.12; Plates 5.31-5.33

APPENDIX B.i. ARCHAEOLOGICAL STRATIGRAPHIC DATA, cont.

Trenton House, Excavation Unit 2B

Context 25 - ?post hole

Description - void until depth of 3.7' below datum, then mottled gravel, clay, sand

Stratigraphy - underlies 4; cuts 5

Cross Refs. - Matrix 5.2; Figure 5.9 (not illustrated in profile); Plate 5.30

Context 26 - trash deposit/?shallow pit [mid-/late 18thc]

Description - clayey silty loam w/ oyster shell (7.5YR 3/4); includes an area of clayey silt (7.5YR 4/2) w/out shell

Stratigraphy - underlies 23; cuts 24; overlies 28

Cross Refs. - Matrix 5.2; Figures 5.9 and 5.12; Plate 5.31

Context 27 - rodent burrow/root disturbance [date unclear]

Description - silty clay (7.5YR 3/2)

Stratigraphy - underlies 24; cuts 28

Cross Refs. - Matrix 5.2; Figure 5.10 (not illustrated in plan)

Context 28 - subsoil

Description - clayey silt (7.5YR 4/6); pebbly in SW corner

Stratigraphy - underlies 24, 26, 27

Cross Refs. - Matrix 5.2; Figures 5.9, 5.10 and 5.12; Plates 5.32 and 5.33

Context 29 - builders trench for brick foundation [3] [late 19thc]

Description - gravelly sand (10YR 4/3) (only observed in profile at end of excavation)

Stratigraphy - cuts 6; contains 3

Cross Refs. - Matrix 5.2; Figures 5.9, 5.10 and 5.12

Context 30 - stone pillar, foundation for porch column [?mid-1850s]

Description - sandstone block, eight inches wide, three feet high, uppermost 16" of the block are dressed; encased w/in later brick wall [3]

Stratigraphy - abutted by 3, 29; ?cut 6 (relationship no longer discernible)

Cross Refs. - Matrix 5.2; Figures 5.9 and 5.12; Plates 5.30, 5.31 and 5.33

Context 31 - builders trench for pillar [30] [?mid-19thc]

Description - base of cut only visible in profile; not recognized during excavation (removed as 22)

Stratigraphy - cut by 29; ?cut 6, 22

Cross Refs. - Matrix 5.2; Figure 5.12 (not illustrated in plan); Plate 5.33

APPENDIX B.i. ARCHAEOLOGICAL STRATIGRAPHIC DATA, cont.

Trenton House, Excavation Unit 3

Context 1 - destruction deposit [mid-20thc]

Description - dry silty ash, slightly sandy, w/ debris (10YR 4/2, 2.5YR 4/2)

Stratigraphy - overlies 2, 10

Cross Refs. - not illustrated

Context 2 - drain pipe [mid-20thc]

Description - iron pipe, 3 1/2 inches diameter

Stratigraphy - underlies 1; cuts 7 (no builders trench), 9

Cross Refs. - Figure 5.14; Plate 5.34

Context 3 [15] - pipe trench for terra-cotta pipe [4] [late 19thc]

Description - silty loam (10YR 4/3)

Stratigraphy - underlies 1; contains 4; cuts 10; cut by 8

Cross Refs. - Figure 5.14; Plate 5.34

Context 4 - drain pipe [late 19thc]

Description - terra cotta drain pipe, four inches diameter

Stratigraphy - contained w/in 3

Cross Refs. - Figure 5.14; Plate 5.34

Context 5 - tile floor [c.1905-08]

Description - cement platform covered w/ pattern of green, red and white 3/4-inch square, two-inch thick tiles

Stratigraphy - underlies 1; overlies 11

Cross Refs. - Figure 5.14; Plate 5.34

Context 6 - builders trench for brick [7] and stone [13] foundation [c.1905-08]

Description - mortar w/ loam

Stratigraphy - underlies 11, 12; contains 7; cuts 15

Cross Refs. - Figure 5.14

Context 7 - brick foundation atop stone foundation [13] [c.1905-08]

Description - mortared red brick, two brick widths wide

Stratigraphy - contained w/in 6; overlies 13

Cross Refs. - Figure 5.14; Plate 5.34

Context 8 - builders trench for brick foundation [9] [c.1905-08]

Description - silty sand w/ mortar (10YR 3/3)

Stratigraphy - underlies 1; cuts 3; contains 9

Cross Refs. - Figure 5.14; Plate 5.34

Context 9 - brick foundation [c.1905-08]

Description - mortared red brick, top course of headers, depth unknown

Stratigraphy - contained w/in 8

Cross Refs. - Figure 5.14; Plate 5.34

APPENDIX B.i. ARCHAEOLOGICAL STRATIGRAPHIC DATA, cont.

Trenton House, Excavation Unit 3

Context 10 [14] - fill/?yard build-up [mid-1850s]

Description - silty sand (10YR 4/4) w/ concentration of nails and metal [14]

Stratigraphy - underlies 1; cut by 3, 8

Cross Refs. - Figure 5.14; Plate 5.34

Context 11 - base for tile floor [5] [c.1905-08]

Description - concrete surface, 3 1/2 inches thick

Stratigraphy - underlies 5; overlies 12

Cross Refs. - not illustrated

Context 12 - wooden planking, base for concrete [11] and tile floor [5] [c.1905-08]

Description - rotting wooden planks, three inches wide, w/ wooden beams running alongside stone wall [13]; some remnants of planking found on top of [13]

Stratigraphy - underlies 11; abuts 7; overlies 13

Cross Refs. - not illustrated

Context 13 - stone foundation supporting brick foundation [7] [c.1905-08]

Description - mortared stone, eight inches wide, two feet deep

Stratigraphy - underlies 7; contained w/in 6

Cross Refs. - not illustrated

Context 14 - see context 10

Context 15 - see context 3

APPENDIX B.ii. ARCHAEOLOGICAL STRATIGRAPHIC DATA

12 AND 14 NORTH WARREN STREET

12 North Warren Street, Excavation Unit A

Context 1 - floor of first floor rear room [early 20thc]
Description - concrete floor, 6" thick, underlain by mortar, debris
Stratigraphy - overlies 2, 4, 5, 14
Cross Refs. - Matrix 6.1; Figures 6.3 and 6.4; Plates 6.2-6.9

Context 2 - ash deposit [late 19th/early 20thc]
Description - ash w/ building debris and sandy loam (10YR 3/4)
Stratigraphy - underlies 1; overlies 19
Cross Refs. - Matrix 6.1; not illustrated

Context 3 - trench for pipe [4], vertical section of pipe
[late 19th/early 20thc]
Description - sandy loam w/ building debris and voids
Stratigraphy - underlies 1; contains 4; cuts 9
Cross Refs. - Matrix 6.1; Figures 6.3 and 6.4; Plate 6.5

Context 4 - pipe, probably a water line [late 19th/early 20thc]
Description - iron pipe, 1 1/2" diameter, runs horizontally,
parallel to brick wall [8], turns to run upwards and vertically
in NE corner of earlier rear wing
Stratigraphy - contained w/in 3, 9
Cross Refs. - Matrix 6.1; Figure 6.3 (not illustrated in profile);

Context 5 - walkway or yard [mid-19th thru early 20thc]
Description - unmortared red brick surface, 1 course deep
Stratigraphy - underlies 1; overlies 6
Cross Refs. - Matrix 6.1; Figures 6.3 and 6.4; Plates 6.3 and 6.9

Context 6 - leveling deposit for walkway or yard [5] [mid-19thc]
Description - sand (10YR 6/4)
Stratigraphy - underlies 5; overlies 17
Cross Refs. - Matrix 6.1; not illustrated

Context 7 - yard build-up/garden soil, probably equivalent to
contexts 23 and 27 [late 18th thru mid-19thc]
Description - silty loam (10YR 4/6)
Stratigraphy - underlies 9; cut by 8 (no builders trench discerned);
overlies 12, 13
Cross Refs. - Matrix 6.1; Figure 6.4 (not illustrated in plan);
Plate 6.5

APPENDIX B.ii. ARCHAEOLOGICAL STRATIGRAPHIC DATA, cont.

12 North Warren Street, Excavation Unit A

Context 8 - NE corner of brick foundation for earlier rear wing
[mid-19thc]

Description - mortared red brick, 2 brick widths wide,
approx. 10 courses deep

Stratigraphy - underlies 9; cut by 16; cuts 7, 23
(no builders trench discerned)

Cross Refs. - Matrix 6.1; Figures 6.3 and 6.4;
Plates 6.3-6.5 and 6.9

Context 9 [10] [11] - fill [late 19thc]

Description - sandy loam w/ brick, and two pockets of medium-grained
sand (10YR 5/6) [10] [11]

Stratigraphy - underlies 1; contains 4, 14; cut by 3; overlies 7, 18

Cross Refs. - Matrix 6.1; Figures 6.3 and 6.4; Plates 6.3 and 6.5

Context 10 - see context 9

Context 11 - see context 9

Context 12 [13] - yard build-up/garden soil, probably equivalent to
context 28 [mid-18th thru early 19thc]

Description - silty loam (10YR 3/6)

Stratigraphy - underlies 7; overlies 15

Cross Refs. - Matrix 6.1; Figures 6.3 and 6.4; Plate 6.5

Context 13 - see context 12

Context 14 - pipe, probably a water line [late 19th/early 20thc]

Description - lead pipe, 3/4" diameter

Stratigraphy - contained w/in 9

Cross Refs. - Matrix 6.1; Figure 6.3 (not illustrated in profile)

Context 15 - subsoil, equivalent to context 29

Description - silty loam and gravel (10YR 3/6, 10YR 4/6)

Stratigraphy - underlies 13; overlies 38

Cross Refs. - Matrix 6.1; Figure 6.4 (not illustrated in plan);
Plates 6.4 and 6.5

Context 16 - fill of pipe trench [mid-/late 19thc]

Description - sandy loam ((10YR 4/4) w/ brick, coal ash and charcoal

Stratigraphy - underlies 6; cuts 18, 19; contains 17

Cross Refs. - Matrix 6.1; Figures 6.3 and 6.4; Plate 6.9

Context 17 - drain pipe, probably for roof gutters of
earlier rear wing [mid-/late 19thc]

Description - ceramic pipe, 7 1/2" exterior diameter, elbow joint
sealed w/ concrete at corner of brick wall [8]

Stratigraphy - contained w/in 16

Cross Refs. - Matrix 6.1; Figures 6.3 (not illustrated in profile);
Plate 6.4

APPENDIX B.ii. ARCHAEOLOGICAL STRATIGRAPHIC DATA, cont.

12 North Warren Street. Excavation Unit A

Context 18 - ?leveling deposit for brick walkway or yard surface [5],
much disturbed [mid-19thc]

Description - fine sand (10YR 6/4) mixed w/ loam (10YR 4/4),
some charcoal

Stratigraphy - underlies 9; cut by 16; abuts 8; overlies 23

Cross Refs. - Matrix 6.1; Figure 6.3 (not illustrated in profile)

Context 19 [20] - fill [mid-/late 19thc]

Description - sandy loam w/ brick frags and charcoal (10YR 4/4)

Stratigraphy - underlies 2; cut by 16; overlies 21, 24

Cross Refs. - Matrix 6.1; Figure 6.4 (not illustrated in plan);
Plate 6.9

Context 20 - see context 19

Context 21 - stone cap for cistern [early 1820s]

Description - slate slab, 22" by 26", 2" thick, covering
cistern opening

Stratigraphy - underlies 20; overlies 26 and 32-37

Cross Refs. - Matrix 6.1; Figures 6.3 and 6.4; Plates 6.4 and 6.7

Context 22 - see context 24

Context 23 - yard build-up/garden soil, probably equivalent to
contexts 7 and 27 [late 18th thru mid-19thc]

Description - clay loam (10YR 4/6)

Stratigraphy - underlies 18; cut by 8 (no builders trench discerned);
overlies 28

Cross Refs. - Matrix 6.1; not illustrated

Context 24 [22] - fill of pipe trench [early 1820s]

Description - debris; brick, mortar and gravel w/ sand
(10YR 6/4) [22]

Stratigraphy - underlies 19; contains 25; cuts 27

Cross Refs. - Matrix 6.1; Figures 6.3 and 6.4;
Plates 6.7, 6.9 and 6.10

Context 25 - drain pipe flowing into cistern [26]; used for
collection of rainwater [early 1820s] from roof of
12 North Warren before rear wing was added

Description - ceramic pipe, 6" diameter, flows SW to NE

Stratigraphy - contained w/in 24

Cross Refs. - Matrix 6.1; Figures 6.3 and 6.4;
Plates 6.6, 6.7, 6.9 and 6.10

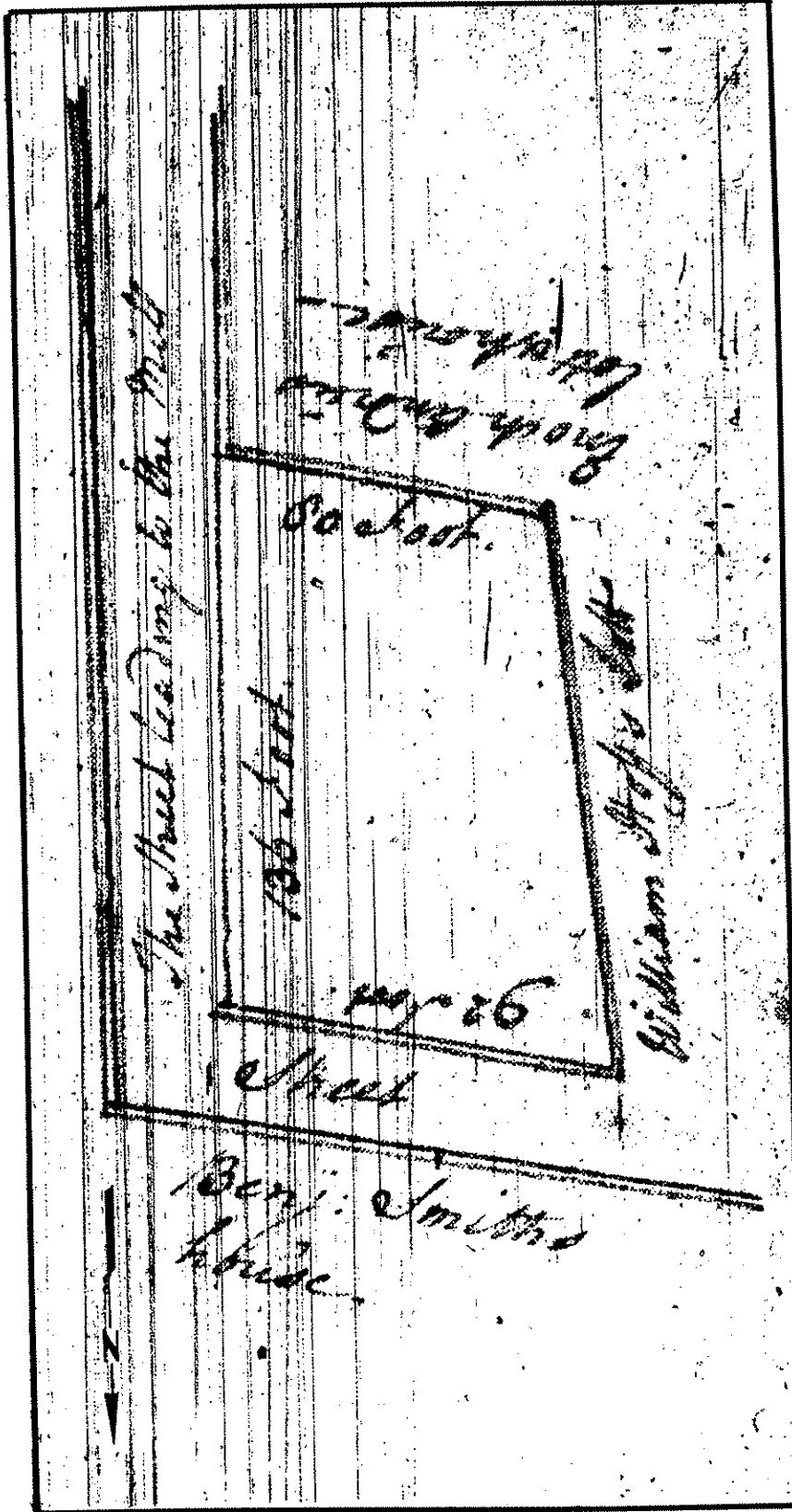


Figure A.2 Map Accompanying Deed of 1732 Showing Southwestern Corner of Second (East State) and Queen (North Broad) Streets. Source: WJ Deed EF 459 (see Volume 1, pp. 4-3 and 4-4 for fuller description).

APPENDIX B.ii. ARCHAEOLOGICAL STRATIGRAPHIC DATA, cont.

12 North Warren Street. Excavation Unit A

Context 26 - cistern fed by drain [25], capped by slab [21] and set into natural river gravels [38] [early 1820s]

Description - circular in plan, beehive-shaped, brick-built structure, interior dimensions - 8' high, max. diameter 4.5'

Stratigraphy - contained w/in 31; cuts 38

Cross Refs. - Matrix 6.1; Figures 6.3 and 6.4; Plates 6.4 and 6.6-6.10

Context 27 - yard build-up/garden soil, probably equivalent to contexts 7 and 23 [late 18th thru mid-19thc]

Description - silty loam (10YR 4/6)

Stratigraphy - cut by 24, 31; overlies 28

Cross Refs. - Matrix 6.1; Figures 6.3 and 6.4; Plates 6.9 and 6.10

Context 28 - yard build-up/garden soil, probably equivalent to contexts 12 and 13 [mid-18th thru early 19thc]

Description - silty clayey loam (10YR 3/4)

Stratigraphy - underlies 23, 27; overlies 29

Cross Refs. - Matrix 6.1; Figures 6.4 (not illustrated in plan); Plates 6.9 and 6.10

Context 29 - subsoil

Description - silty clayey loam (10YR 3/6, 10YR 4/6)

Stratigraphy - underlies 28; overlies 38

Cross Refs. - Matrix 6.1; Figure 6.4 (not illustrated in plan); Plates 6.9 and 6.10

Context 30 - stone wall, ?outbuilding foundation or stone cistern, probably same structure as context 28 in Excavation Unit B [?late 18th/early 19thc]

Description - mortared stone wall, sand and shell mortar, 1' wide, max. surviving depth of 5'

Stratigraphy - cut by 31; cuts 29 (no builders trench discerned)

Cross Refs. - Matrix 6.1; Figures 6.3 and 6.4; Plates 6.9 and 6.10

Context 31 - fill of builders trench for cistern [26] [early 1820s]

Description - sandy loam (10YR 4/4)

Stratigraphy - contains 26; cuts 27, 30

Cross Refs. - Matrix 6.1; Figures 6.3 and 6.4; Plates 6.7, 6.9 and 6.10

Context 32 - cistern fill [early 1820s]

Description - organic clayey loam (10YR 2/2)

Stratigraphy - overlies 33; abuts 26

Cross Refs. - Matrix 6.1; Figure 6.4 (not illustrated in plan)

APPENDIX B.ii. ARCHAEOLOGICAL STRATIGRAPHIC DATA, cont.

12 North Warren Street. Excavation Unit A

Context 33 - cistern fill [early 1820s]

Description - sandy loam (10YR 3/3)

Stratigraphy - underlies 32; abuts 26; overlies 34

Cross Refs. - Matrix 6.1; Figure 6.4 (not illustrated in plan)

Context 34 - cistern fill [early 1820s]

Description - mottled sand (10YR 3/3, 10YR 3/4)

Stratigraphy - underlies 33; abuts 26; overlies 35

Cross Refs. - Matrix 6.1; Figure 6.4 (not illustrated in plan)

Context 35 - cistern fill [early 1820s]

Description - sandy loam (10YR 3/3)

Stratigraphy - underlies 34; abuts 26; overlies 36

Cross Refs. - Matrix 6.1; Figure 6.4 (not illustrated in plan)

Context 36 - cistern fill [early 1820s]

Description - mottled sand (10YR 3/3, 10YR 3/4)

Stratigraphy - underlies 35; abuts 26; overlies 37

Cross Refs. - Matrix 6.1; Figure 6.4 (not illustrated in plan)

Context 37 - cistern fill [early 1820s]

Description - sand (10YR 4/3)

Stratigraphy - underlies 36; abuts 26; overlies 38

Cross Refs. - Matrix 6.1; Figure 6.4 (not illustrated in plan)

Context 38 - subsoil

Description - gravel

Stratigraphy - underlies 15, 29, 37

Cross Refs. - Matrix 6.1; Figure 6.4 (not illustrated in plan);

Plates 6.9 and 6.10

APPENDIX B.ii. ARCHAEOLOGICAL STRATIGRAPHIC DATA, cont.

12 North Warren Street, Excavation Unit B

Context 1 - floor of first floor rear room [early 20thc]

Description - cement floor on rubble leveling deposit

Stratigraphy - overlies 3, 11

Cross Refs. - Matrix 6.2; Figure 6.5 (not illustrated in plan);
Plates 6.11-6.16

Context 2 - brick yard surface [late 19th/early 20thc]

Description - machine-made red bricks laid in rectilinear pattern
(portions laid diagonally), one course thick

Stratigraphy - underlies 8, 31; overlies 13

Cross Refs. - Matrix 6.2; Figure 6.5 (not illustrated in plan);
Plates 6.11-6.14 and 6.16

Context 3 - underpinning for cement floor [1] (see also context 11)
[early 20thc]

Description - sawn wood beam, 5" wide, 3" thick

Stratigraphy - underlies 1; overlies 6

Cross Refs. - Matrix 6.2; Figure 6.5 (not illustrated in plan);
Plates 6.11 and 6.15

Context 4 [7] [10] - fill [late 19thc]

Description - compact loam w/ brick, coal, coal ash and sand lenses
(10YR 5/6)

Stratigraphy - underlies 14; overlies 5, 9, 17

Cross Refs. - Matrix 6.2; Figure 6.5 (not illustrated in plan);
Plates 6.11 and 6.16

Context 5 - stone cap for cistern (see also contexts 9 and 17)
[late 19thc]

Description - stone slab, 4" thick, 16" wide, approx. 6' long

Stratigraphy - underlies 4; overlies 19

Cross Refs. - Matrix 6.2; Figure 6.5 (not illustrated in profile);
Plate 6.12

Context 6 [18] - fill/leveling deposit [early 20thc]

Description - debris; brick, concrete and mortar w/ pocket
of silty loam (10YR 5/4) [18]

Stratigraphy - underlies 1, 3, 11; abuts 8, 31; overlies 19

Cross Refs. - Matrix 6.2; Figure 6.5 (not illustrated in plan);
Plate 6.15

Context 7 - see context 4

Context 8 - ?underpinning for cement floor [1] [early 20thc]

Description - mortared red brick, 3 courses thick, ?reused from
brick surface [2]

Stratigraphy - abutted by 6

Cross Refs. - Matrix 6.2; Figure 6.5; Plates 6.11-6.16

APPENDIX B.ii. ARCHAEOLOGICAL STRATIGRAPHIC DATA, cont.

12 North Warren Street, Excavation Unit B

Context 9 - stone cap for cistern (see also contexts 5 and 17)
Description - stone slab, 4" thick, approx. 14" wide and 4' long,
partially collapsed into cistern
Stratigraphy - underlies 4; overlies 19
Cross Refs. - Matrix 6.2; Figure 6.5 (not illustrated in profile);
Plate 6.12

Context 10 - see context 4

Context 11 - underpinning for cement floor [1] (see also context 3)
[early 20thc]
Description - sawn wood beam, 5" wide, 3" thick
Stratigraphy - underlies 1; overlies 6
Cross Refs. - Matrix 6.2; not illustrated in plan or profile;
Plate 6.11

Context 13 [16] - minor leveling deposit for brick surface [2]
[late 19thc]
Description - silty loam (5YR 2.5/1) with sand (10YR 7/2)
Stratigraphy - underlies 2; overlies 14
Cross Refs. - Matrix 6.2; Figure 6.5 (not illustrated in plan);
Plates 6.16

Context 14 [15] - trash accumulation [late 19thc]
Description - debris; brick, bone, glass, coal and coal ash (10YR 3/6)
Stratigraphy - underlies 13; overlies 4
Cross Refs. - Matrix 6.2; not illustrated

Context 16 - see context 13

Context 17 - stone cap for cistern (see also contexts 5 and 9)
[late 19thc]
Description - stone slab, 3" thick, 14" wide, 3'6" long
Stratigraphy - underlies 4; overlies 19
Cross Refs. - Matrix 6.2; Figure 6.5 (not illustrated in profile);
Plate 6.12

Context 18 - see context 6

Context 19 - cistern fill [late 19thc]
Description - loam w/ debris (5YR 2.5/2)
Stratigraphy - contained w/in 20; underlies 5, 7, 9; overlies 21
Cross Refs. - Matrix 6.2; Figure 6.5; Plate 6.15

Context 20 - brick lining of cistern [mid-19thc]
Description - mortared red brick cistern wall, 1 brick width
wide, bell-shaped but slightly distorted from pressure of
surrounding soil, large boulder [25] (probably bedrock) at base
Stratigraphy - contained within 23; overlies 25
Cross Refs. - Matrix 6.2; Figure 6.5; Plates 6.13-6.16

APPENDIX B.ii. ARCHAEOLOGICAL STRATIGRAPHIC DATA, cont.

12 North Warren Street, Excavation Unit B

Context 21 - cistern fill [late 19thc]

Description - loam with debris (10YR 4/2)

Stratigraphy - underlies 19; overlies 22

Cross Refs. - Matrix 6.2; Figure 6.5 (not illustrated in plan);
Plate 6.15

Context 22 - cistern fill [late 19thc]

Description - compact loam w/ construction debris, including
whitewashed bricks, some mortared (10YR 5/3)

Stratigraphy - underlies 21; overlies 24

Cross Refs. - Matrix 6.2; Figure 6.5 (not illustrated in plan);
Plate 6.15

Context 23 [29] [30] - builders trench for cistern [mid-19thc]

Description - loam w/ concentrations of brick and stone, possibly
to reinforce cistern wall (10YR 4/3); also includes possible
rodent burrow w/ fill of silty loam (10YR 5/4) [29] and 4" of
silty loam (10YR 3/4) [30]

Stratigraphy - contains 20; abuts 28

Cross Refs. - Matrix 6.2; Figure 6.5; Plates 6.13-6.16

Context 24 - cistern fill [late 19thc]

Description - compact loam (10YR 5/3)

Stratigraphy - underlies 22; overlies 26

Cross Refs. - Matrix 6.2; Figure 6.5 (not illustrated in plan);
Plate 6.15

Context 25 - boulder (bedrock)

Description - large stone at bottom of cistern, probably bedrock
outcrop, cistern wall built around it

Stratigraphy - underlies 20

Cross Refs. - Matrix 6.2; Figure 6.5 (not illustrated in profile);
Plates 6.14 and 6.15

Context 26 - cistern fill [late 19thc]

Description - silty ash (2.5YR 5/4), compactness increases w/ depth

Stratigraphy - underlies 24; overlies 27

Cross Refs. - Matrix 6.2; Figure 6.5 (not illustrated in plan);
Plates 6.15

Context 27 - cistern floor

Description - extremely compact sand w/ pebbles, ?cemented
glacial gravels (10YR 6/6)

Stratigraphy - underlies 26; abuts 20

Cross Refs. - Matrix 6.2; Figure 6.5; Plates 6.14 and 6.15

APPENDIX B.ii. ARCHAEOLOGICAL STRATIGRAPHIC DATA, cont.

12 North Warren Street, Excavation Unit B

Context 28 - stone wall, southwest corner of ?outbuilding
foundation or stone cistern; probably same structure as
context 30 in Excavation Unit A [?late 18th/early 19thc]

Description - mortared stone wall, mortar very sandy

Stratigraphy - abutted by 23

Cross Refs. - Matrix 6.2; Figure 6.5; Plates 6.15 and 6.16

Context 29 - see context 23

Context 30 - see context 23

Context 31 - ?underpinning for cement floor [1] [early 20thc]

Description - mortared red brick, 3 courses thick, ?reused from
brick surface [2]

Stratigraphy - abutted by 6; underlies 3; overlies 19

Cross Refs. - Matrix 6.2; Figure 6.5 (not illustrated in plan);
Plate 6.15

APPENDIX B.ii. ARCHAEOLOGICAL STRATIGRAPHIC DATA, cont.

12 North Warren Street, Excavation Unit C

Context 1 - fill/debris [early 20thc]

Description - coal ash and rubble

Stratigraphy - overlies 4

Cross Refs. - Matrix 6.3; Figure 6.6 (not illustrated in plan)

Context 2 - standing brick wall, north wall of 12 North Warren Street
[early 20thc]

Description - mortared red brick wall on top of stone foundation [11]

Stratigraphy - overlies 11

Cross Refs. - Matrix 6.3; Figure 6.6 (not illustrated in plan);

Plate 6.18

Context 3 - north cellar wall of 12 North Warren Street [early 1820s]

Description - rough-cut stone wall with sandy mortar

Stratigraphy - abutted by 5; laid w/in 8

Cross Refs. - Matrix 6.3; Figures 6.6

Context 4 - water line [early 20thc]

Description - cast iron pipe

Stratigraphy - underlies 1; laid w/in 12

Cross Refs. - Matrix 6.3; Figures 6.6; Plate 6.18

Context 5 - construction deposit [early 20thc]

Description - clay loam w/ brick, plaster, coal ash, wood (10YR 3/4)

Stratigraphy - abuts 3, 13; overlies 7

Cross Refs. - Matrix 6.3; Figure 6.6 (not illustrated in plan);

Plate 6.18

Context 6 - builders trench for north wall of 12 North Warren Street
[2 and 11] [early 1820s]

Description - mottled sandy clay loam w/ brick, plaster, charcoal
(10YR 5/8, 10YR 3/4)

Stratigraphy - cuts 9; contains 11

Cross Refs. - Matrix 6.3; Figures 6.6

Context 7 - possible post hole (?for scaffolding) [early 1820s]

Description - sandy clay loam mottled w/ 10YR 5/8 clay silt,
brick, plaster, charcoal (10YR 3/4)

Stratigraphy - underlies 5; cuts 9

Cross Refs. - Matrix 6.3; Figure 6.6 (not illustrated in profile)

APPENDIX B.ii. ARCHAEOLOGICAL STRATIGRAPHIC DATA, cont.

12 North Warren Street, Excavation Unit C

Context 8 - builders trench for north cellar wall of
12 North Warren Street [3] [early 1820s]

Description - sandy clay loam (10YR 5/8) mottled w/ clay silt,
brick, plaster, charcoal (10YR 3/4)

Stratigraphy - cuts 9; contains 3

Cross Refs. - Matrix 6.3; Figures 6.6

Context 9 - base of yard build-up/garden soil and subsoil
[mid-18th thru early 19thc]

Description - clay silt w/ some charcoal, coal ash (10YR 5/8)

Stratigraphy - cut by 6, 7, 8; overlies 10

Cross Refs. - Matrix 6.3; Figures 6.6

Context 10 - subsoil

Description - river gravel with cobbles

Stratigraphy - underlies 9

Cross Refs. - Matrix 6.3; Figure 6.6 (not illustrated in plan)

Context 11 - stone foundation for north wall of
12 North Warren Street [early 1820s]

Description - mortared, rough-cut stone wall topped w/ brick wall [2]

Stratigraphy - underlies 2; abutted by 13; laid w/in 6

Cross Refs. - Matrix 6.3; Figures 6.6; Plate 6.18

Context 12 - pipe trench [early 20thc]

Description - debris in clayey loam (10YR 3/4)

Stratigraphy - underlies 1; cuts 5; contains 4

Cross Refs. - Matrix 6.3; Figures 6.6; Plate 6.18

Context 13 - brick surface (?originally more extensive;
mostly removed) [19thc]

Description - lineal unmortared red brick surface, running parallel
to brick and stone wall [contexts 2 and 11], 2 brick widths wide

Stratigraphy - underlies 1; abutted by 5; abuts 11

Cross Refs. - Matrix 6.3; Figures 6.6; Plate 6.18

APPENDIX B.ii. ARCHAEOLOGICAL STRATIGRAPHIC DATA, cont.

14 North Warren Street, Alley Excavation Unit

Context 1 - alley and yard surface [mid-20thc]

Description - asphalt, coal oil and cinders, 1" thick

Stratigraphy - overlies 2, 20

Cross Refs. - Matrix 6.4; Figures 6.7 and 6.8; Plates 6.19-6.21

Context 2 - alley and yard surface [early 20thc]

Description - tightly packed layer of cobbles laid on end w/ halved cobbles filling gaps; a single row of Belgian blocks, running NE/SW (parallel to the rear wing of 14 North Warren Street), was found incorporated into this cobble surface; some ash between stones

Stratigraphy - underlies 1; abuts 20; overlies 3

Drawing refs - Matrix 6.4; Figures 6.7 and 6.8; Plate 6.19

Context 3 - fill and leveling deposit for cobble surface [2] [early 20thc]

Description - ash, cinders, charcoal and coarse sand

Stratigraphy - underlies 2; overlies 4, 13, 15, 22

Cross Refs. - Matrix 6.4; Figure 6.8 (not illustrated in plan); Plate 6.19

Context 4 - fill [19thc]

Description - coarse sand w/ debris, cobbles and pebbles

Stratigraphy - underlies 3; abuts 10, 12; overlies 5

Cross Refs. - Matrix 6.4; Figure 6.8 (not illustrated in plan); Plate 6.19

Context 5 - yard build-up/garden soil [19thc]

Description - compact silty loam (10YR 3/4)

Stratigraphy - underlies 4; cut by 6, 22, 23; abuts 14; overlies 7, 21

Cross Refs. - Matrix 6.4; Figures 6.7 and 6.8; Plate 6.21

Context 6 - ?builders trench for stone wall [12], very indistinct [19thc]

Description - mottled orange, brown sand, brown loam, w/ debris, charcoal, pebbles

Stratigraphy - underlies 4; cuts 5; contains 12; overlies 8

Cross Refs. - Matrix 6.4; Figures 6.7 (not illustrated in profile)

APPENDIX B.ii. ARCHAEOLOGICAL STRATIGRAPHIC DATA, cont.

14 North Warren Street, Alley Excavation Unit

Context 7 - yard build-up/garden soil [late 18th thru mid-19thc]
Description - very mottled orange brown sand, tan clay, silts
w/ brick, mortar and stone
Stratigraphy - underlies 5; cut by 21; abuts 11; overlies 8
Cross Refs. - Matrix 6.4; Figures 6.7 and 6.8; Plates 6.20 and 6.21

Context 8 [9] - subsoil
Description - sandy, clayey silt (7.5YR 5/4, 7.5YR 5/6)
Stratigraphy - underlies 7, 11 (no builders trench discernible), 18
Cross Refs. - Matrix 6.4; Figure 6.8 (not illustrated in plan);
Plates 6.20 and 6.21

Context 9 - see context 8

Context 10 - stone wall, ?outbuilding foundation [?early 19thc]
Description - well-dressed, predominantly sandstone wall, 18" wide,
approx. 28" deep; lower courses dry laid, upper courses mortared,
brick fragments incorporated into mortar and wall chinking
Stratigraphy - underlies 3; abutted by 15, 16; contained w/in 19
Cross Refs. - Matrix 6.4; Figures 6.7 and 6.8; Plates 6.19-6.21

Context 11 - stone wall, ?outbuilding foundation or garden boundary
[?late 18thc]
Description - mortared stone wall, 13" wide, 24" deep; masonry
includes quartz cobbles, sandstone and mica schist, stones are
smaller than those used for wall to north [10]; capped w/ mortar
Stratigraphy - abutted by 7, 12; cuts 8 (no builders trench
discernible)
Cross Refs. - Matrix 6.4; Figures 6.7 and 6.8; Plates 6.19-6.21

Context 12 - stone and brick wall, ?outbuilding foundation [19thc]
Description - heavily mortared brick and dressed sandstone wall
underlain by 4 courses of mortared brick on top of mortared,
cut sandstone; 17" wide, approx. 24" deep
Stratigraphy - underlies 4; contained w/in 6; abutted by 23
Cross Refs. - Matrix 6.4; Figure 6.7 (not illustrated in profile);
Plates 6.20 and 6.21

Context 13 - brick wall, ?outbuilding foundation [?19thc]
Description - poorly made red brick wall, bricks stacked header
upon header, mortar very loose and sandy, some glazed bricks,
width and depth unknown
Stratigraphy - underlies 3; abutted by 23
Cross Refs. - Matrix 6.4; Figure 6.7 (not illustrated in profile);
Plate 6.20

APPENDIX B.ii. ARCHAEOLOGICAL STRATIGRAPHIC DATA, cont.

14 North Warren Street, Alley Excavation Unit

Context 14 - stone wall, ?property boundary or outbuilding foundation
[?early 19thc]

Description - mortared stone wall, dressed stone, width and depth
unknown

Stratigraphy - abutted by 5; contained w/in 21

Cross Refs. - Matrix 6.4; Figures 6.7 and 6.8; Plate 6.21

Context 15 - fill [19thc]

Description - loam w/ gravel, bricks and mortar (5YR 3/4)

Stratigraphy - underlies 3; abuts 10; overlies 16

Cross Refs. - Matrix 6.4; Figures 6.7 and 6.8; Plate 6.21

Context 16 - fill [19thc]

Description - ash lens w/ mortar and brick fragments

Stratigraphy - underlies 15; abuts 10; overlies 17, 19

Cross Refs. - Matrix 6.4; Figure 6.8 (not illustrated in plan)

Context 17 - yard build-up/garden soil or ?fill

[late 18thc/early 19thc]

Description - loam (5YR 3/4)

Stratigraphy - underlies 16; cut by 19; overlies 18

Cross Refs. - Matrix 6.4; Figure 6.8 (not illustrated in profile)

Context 18 - yard build-up/garden soil or ?fill

[late 18th/early 19thc]

Description - loam w/ brick fragments (5YR 3/4)

Stratigraphy - underlies 17; cut by 19; overlies 8

Cross Refs. - Matrix 6.4; Figure 6.8 (not illustrated in profile)

Context 19 - builders trench for wall [10] [19thc]

Description - loam (5YR 3/4)

Stratigraphy - underlies 16; contains 10; cuts 17

Cross Refs. - Matrix 6.4; Figure 6.8 (not illustrated in plan)

Context 20 - pavement at rear of alley [20thc]

Description - concrete surface

Stratigraphy - underlies 1; abutted by 2; overlies 14

Cross Refs. - Matrix 6.4; Figures 6.7 and 6.8; Plate 6.21

Context 21 - builders trench for wall [14] [?early 19thc]

Description - loam (5YR 3/4)

Stratigraphy - underlies 5; contains 14; cuts 7

Cross Refs. - Matrix 6.4; Figure 6.8 (not illustrated in plan);
Plate 6.21

APPENDIX B.ii. ARCHAEOLOGICAL STRATIGRAPHIC DATA, cont.

14 North Warren Street. Alley Excavation Unit

Context 22 - upright timber, shed support [19thc]
Description - sawn timber set into fill [5], yard build-up/garden soil [7] and subsoil [8]
Stratigraphy - underlies 3; cuts 5
Cross Refs. - Matrix 6.4; Figure 6.7 (not illustrated in profile); Plates 6.20 and 6.21

Context 23 - fill in area defined by walls [12] and [13],
outbuilding interior [late 19thc]
Description - brick, stone and mortar rubble in loam
Stratigraphy - underlies 3; abuts 12, 13; cuts 5, 6
Cross Refs. - Matrix 6.4; Figure 6.7 (not illustrated in profile); Plates 6.20 and 6.21